

**AI-270**  
**MCL-7000 Series Installation Kit for**  
**American Iron Horse drag bar mount**

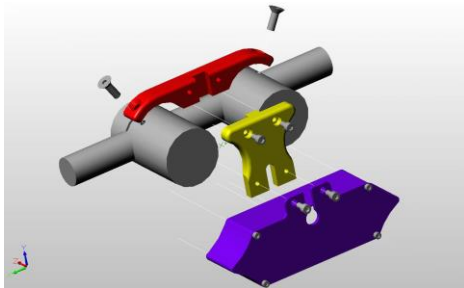


- Kit includes:
- (1) Wiring harness
  - (1) Top mount bracket
  - (1) Bottom mount bracket
  - (2) 10-32 X 3/8" socket head screws
  - (2) 10-32 X 1/2" socket head screws
  - (6) Cable ties
  - (1) Installation kit instruction manual

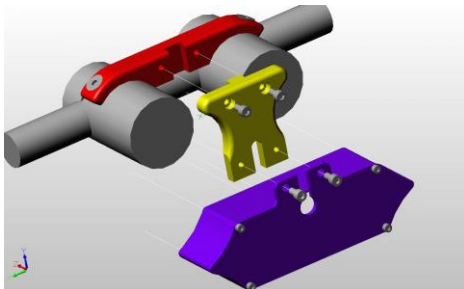
Gauge installation:

1. Remove the two screws from the top of the original gauge that hold it to the bars and remove the gauge. Keep these screws to mount the brackets from this kit to the bars.
  2. Disconnect the original gauge harness from the bike at the two connectors located close to the frame under the front side of the tank.
  3. Remove the stock harness from the bike noting where the harness is routed.
  4. Route the wiring harness from this kit back into the routing location of the original harness.
  5. Install the mounting brackets following the instructions below for either below or above bar mount.
- NOTE: The views are looking from the front of the bike.

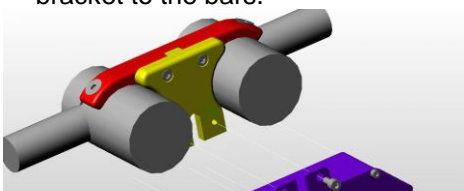
BELOW BAR MOUNT



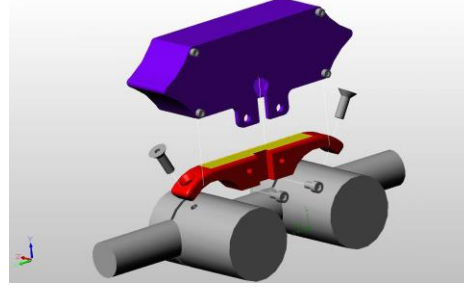
Locate all the mounting hardware.



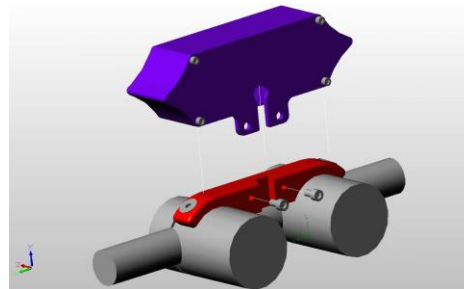
Using the original gauge mounting screws, attach the top mounting bracket to the bars.



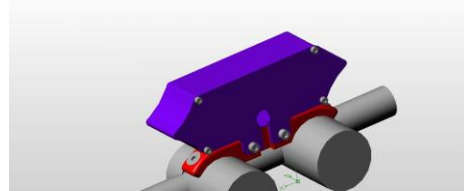
ABOVE BAR MOUNT



Locate all the mounting hardware.

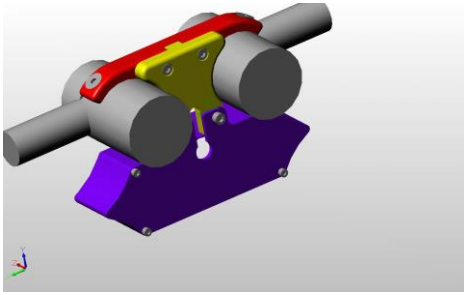


Using the original gauge mounting screws, attach the top mounting



Using the two 10-32 X ½” screws, attach the bottom mount bracket to the top mount bracket.

Gauge fully mounted.



Gauge fully mounted.

6. Remove the back plate from the MCL-7000 Series gauge.
7. Work the grommet from the harness into the slot in the back plate.
8. Connect the harness from this kit to the MCL-7000 Series gauge.
9. Put back cover back onto MCL-7000 Series gauge so that the gauge will face up when mounted.
10. Mount gauge to mounting hardware.
11. Plug 4 pin and 6 pin connector into connectors in original place.
12. Disconnect the two pin plug from the ignition switch located under the tank by the ignition switch.
13. Plug the 2 pin connector from the ignition switch into the gauge harness
14. Plug the other 2 pin connector from the gauge harness into the 2 pin connector from the bike.
15. Secure the wire with provided plastic ties.

#### Troubleshooting:

Occasionally, the stock American Iron Horse ignition switch can “chatter” due to vibrations at high engine RPM. This can cause the gauge to operate incorrectly. It is recommended to solve this problem by replacing the stock ignition switch with a Harley Davidson switch (kit number 71441-94). This switch is less prone to chatter.

#### **SERVICE AND REPAIR**

DAKOTA DIGITAL offers complete service and repair of its product line. In addition, technical consultation is available to help you work through any questions or problems you may be having installing one of our products. Please read through the Troubleshooting Guide. There, you will find the solution to most problems. **Should you ever need to send the unit back for repairs, please call our technical support line, (605) 332-6513, to request a Return Merchandise Authorization number.** Package the product in a good quality box along with plenty of packing material. Ship the product by UPS or insured Parcel Post. Be sure to include the RMA number on the package, and include a complete description of the problem with RMA number, your full name and address (street address preferred), and a telephone number where you can be reached during the day. Any returns for warranty work must include a copy of the dated sales receipt from your place of purchase. Send no money. We will bill you after repair.

#### **Dakota Digital 24 Month Warranty**

DAKOTA DIGITAL warrants to the ORIGINAL PURCHASER of this product that should it, under normal use and condition, be proven defective in material or workmanship within 24 MONTHS FROM THE DATE OF PURCHASE, such defect(s) will be repaired or replaced at Dakota Digital's option.

This warranty does not cover nor extend to damage to the vehicle's systems, and does not cover removal or reinstallation of the product. This Warranty does not apply to any product or part thereof which in the opinion of the Company has been damaged through alteration, improper installation, mishandling, misuse, neglect, or accident.

This Warranty is in lieu of all other expressed warranties or liabilities. Any implied warranties, including any implied warranty of merchantability, shall be limited to the duration of this written warranty. Any action for breach of any warranty hereunder, including any implied warranty of merchantability, must be brought within a period of 24 months from date of original purchase. No person or representative is authorized to assume, for Dakota Digital, any liability other than expressed herein in connection with the sale of this product.

**⚠ WARNING:** This product can expose you to chemicals including lead, which is known to the State of California to cause cancer and birth defects or other reproductive harm. For more information go to [www.P65Warnings.ca.gov](http://www.P65Warnings.ca.gov)



4510 W. 61st St. North  
Sioux Falls, SD 57107  
www.dakotadigital.com  
dakotasupport@dakotadigital.com

Phone (605) 332-6513  
Fax (605) 339-4106

Copyright 2011 - Dakota Digital, Inc.