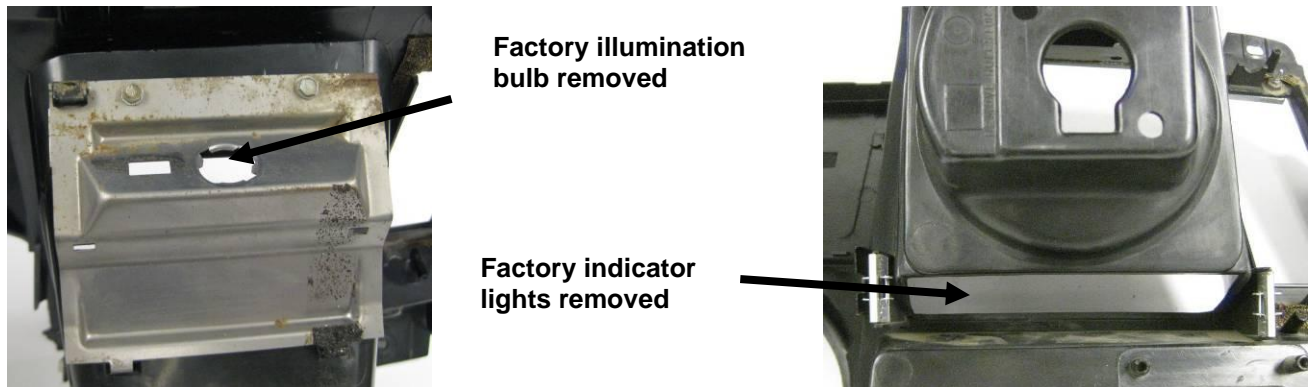


2. Once the original gauge internals have been removed, there are two reflectors (one on each side) inside the housing that need to be removed for clearance of the new VHX gauges (see photo).



3. Now, remove the light bulbs and indicator light panels. Since these functions are built into the VHX system, you can connect the indicator wires to the control box to retain the desired functions.

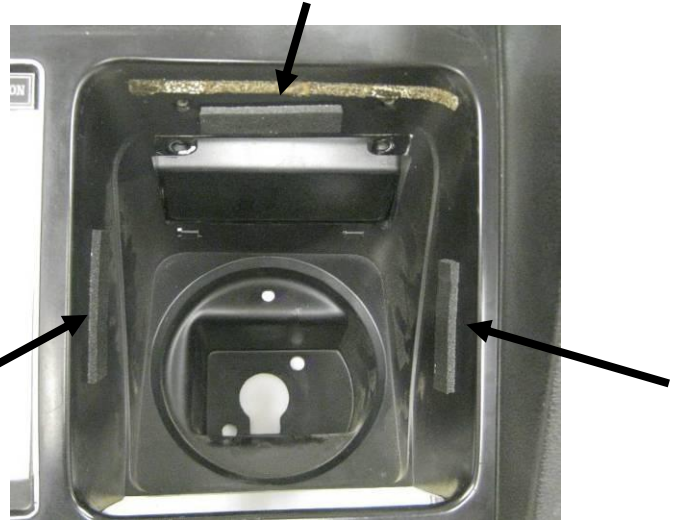


4. You should be left with a bare housing, now you are ready for VHX installation. This is also a good time to clean the original housing to remove any dust/dirt before installation of your new gauges.



5. Begin with the speedometer installation, located in the left side opening in the factory dash. Cut three pieces of the supplied foam tape, 2" long. Install foam strips on the top and sides of each opening about $\frac{1}{2}$ " down from the face of the housing. This foam provides a cushion for the new VHX cans and forms a tight, rattle-free fit.

Foam Tape



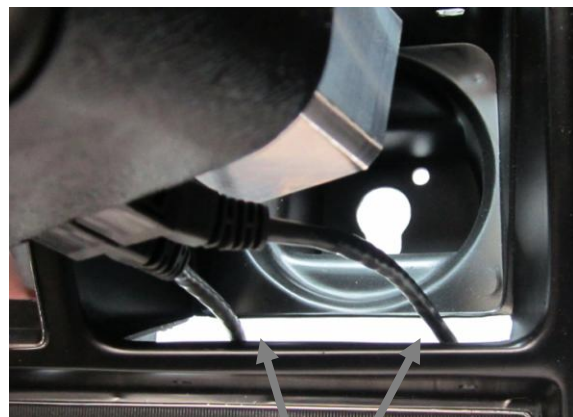
6. The speed gauge has two CAT5 ports on the back side. Connect the 24" CAT5 cable to either port and one of the 36" CAT5 cables to the other port.



7. Remove the protective lens tape and insert the VHX **speedometer** into the **left** side of the factory housing. You will need to fold the CAT5 cables and route them through the opening where the original indicator lights were mounted in order to get the VHX bezel to sit flush with the housing. As the gauge goes in, route the CAT5 cables through the opening in the bottom of the housing, keeping in mind the 24" cable needs to be routed to the other side where it will connect to the tachometer.



Pre-bend cables to the side before installing so unit will sit flush once inserted into dash



Cable routed through indicator light opening

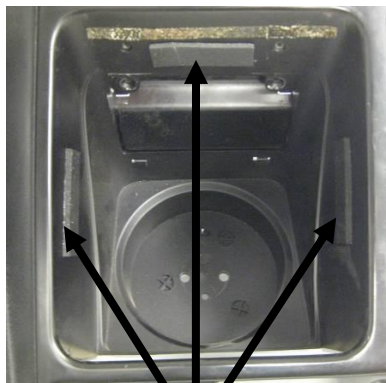
WRONG!!!
Cable will get
pinched by the
pull block

Bezel flush with housing
once fully seated in housing
and cable properly routed

8. Using the two provided **10-32 x 1.5"** screws and **nylon shoulder washers**, secure the speedometer assembly to the housing. Start the screws into the back of the factory housing and into the pull-block on the back of the gauge assembly. Tighten with a 1/8" Allen wrench.



9. To install the tachometer, repeat the steps above, making sure to use the shorter screws and plastic washers. The tachometer uses two **10-32 x 1"** screws and two **flat nylon washers**. Be sure to connect the 24" CAT5 cable from the speedometer to the tachometer.



Foam tape



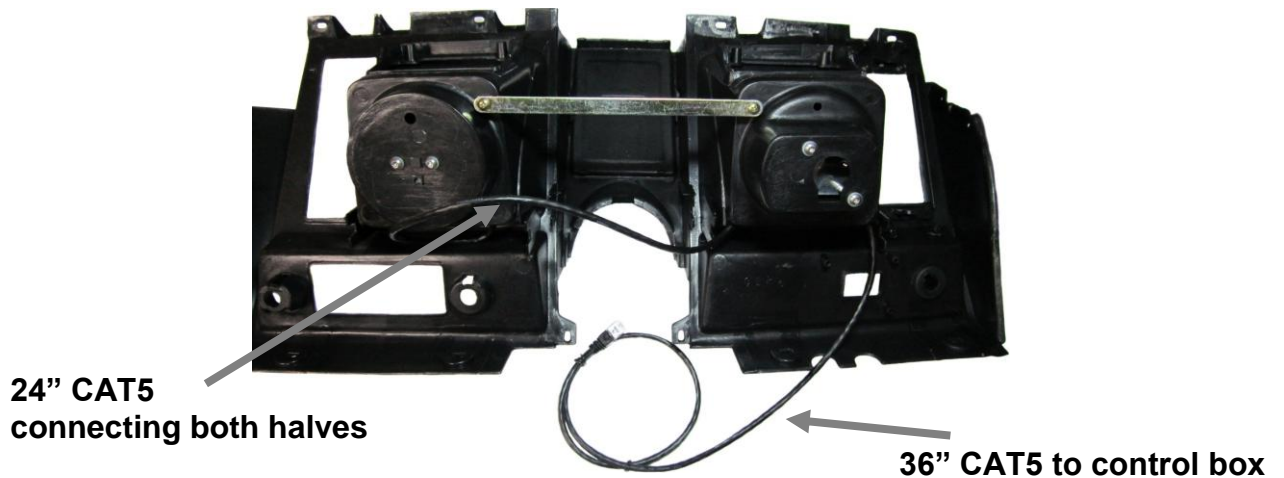
Cable routed through
indicator light opening

Mounting
screws

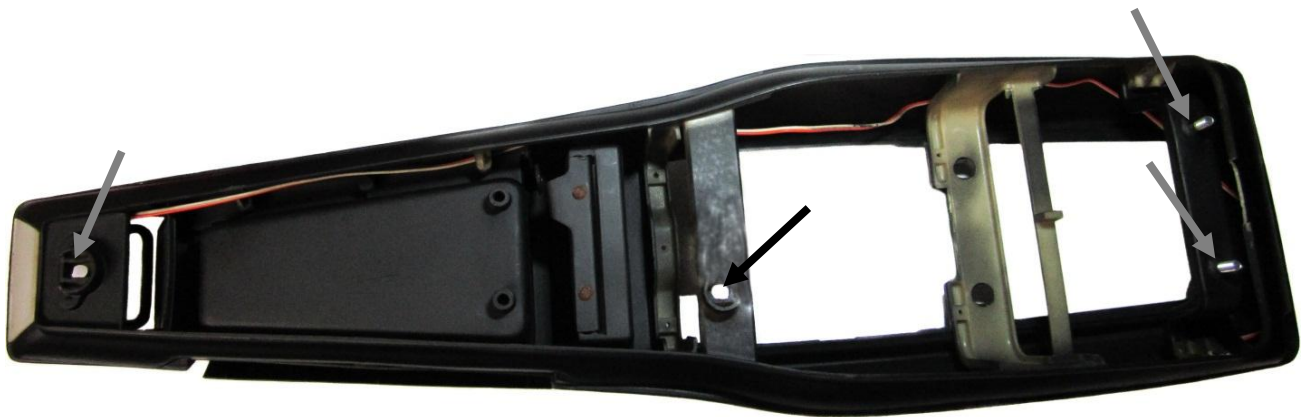


50423A

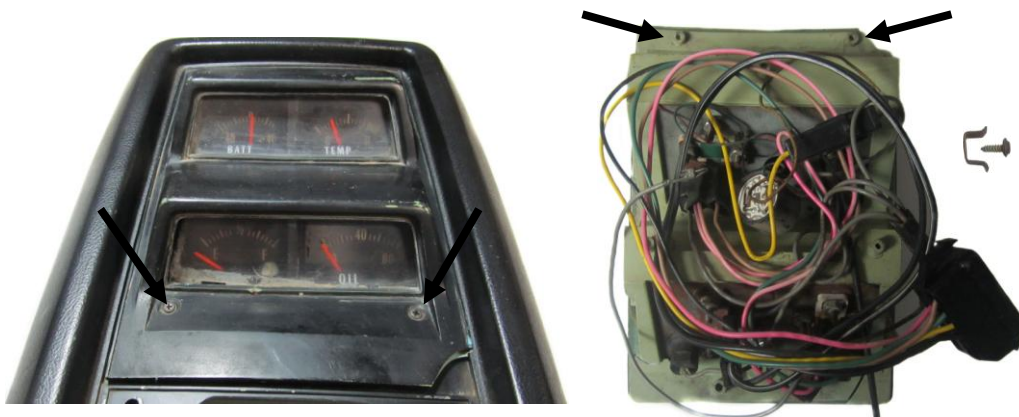
10. Both cables should be routed through the stock indicator light opening; the system is ready for re-installation into the dash if it was removed.



11. Next, the entire console will need to be removed. Looking at the picture of the console from the bottom, you can see there are four (4) mounting points. Make sure to disconnect all electrical connections and save all hardware for reinstallation.

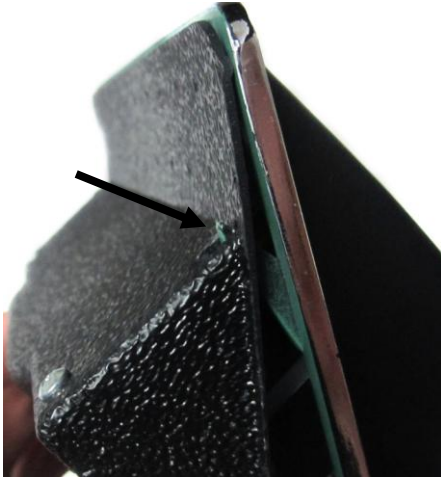


12. Remove the gauge cluster from the console by removing the four (4) screws holding the cluster to the console. Also remove the top screws that hold the bezel to the housing as shown in the picture. The bezel and screws will be reused for the new gauges.





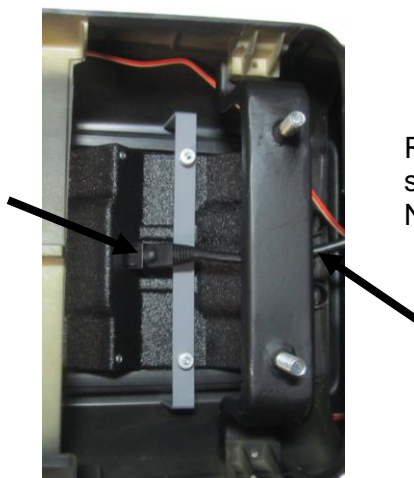
- 13a. Place the bezel over the VHX system and be sure to align the tabs from the bezel into the slots cut into the VHX housing as shown.



- 13b. Attach the bezel to the VHX cluster using the original screws from disassembly and the two (2) flat spring nuts provided.



14. With the bezel mounted to the VHX system, place the cluster back into the console and attach the U-bracket to the two (2) mounting studs using the thumb nuts provided to secure the cluster to the console. Also connect the final 36" CAT5 cable to the back of the VHX system. The console is now ready to reinstall back into the vehicle.



Route cable between the VHX system and bracket
NOT UNDER THE BRACKET

15. Carefully route both CAT5 cables to the control box mounting location and connect both to the control box. It doesn't matter which cable goes where, all of the jacks are the same.



16. Display installation is complete; refer to the main manual for wiring instructions to complete the VHX installation.



⚠ WARNING: This product can expose you to chemicals including lead, which is known to the State of California to cause cancer and birth defects or other reproductive harm. For more information go to www.P65Warnings.ca.gov



4510 W. 61st St. North
Sioux Falls, SD 57107
www.dakotadigital.com
dakotasupport@dakotadigital.com

Phone (605) 332-6513
Fax (605) 339-4106

Copyright 2011 - Dakota Digital, Inc.