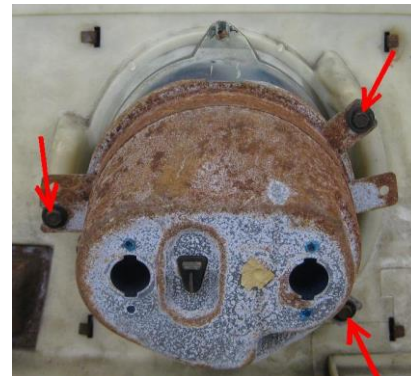
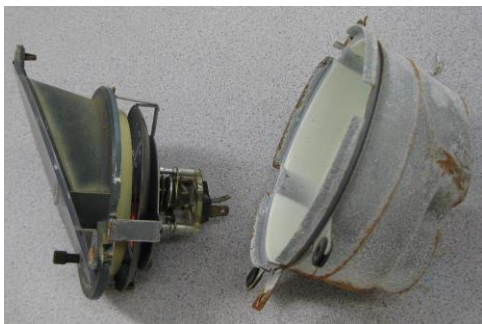


# DAKOTA DIGITAL CLK-69M Installation Guide

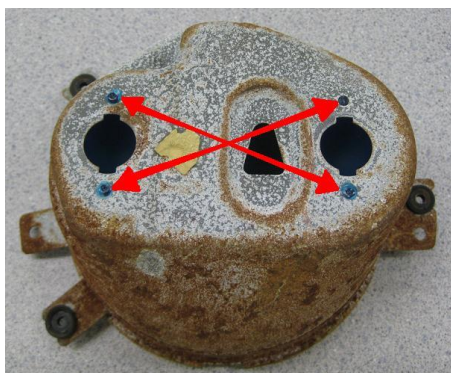
Fits 1969-70 round Ford Mustang housing.

1. Remove the clock from the bezel by removing the 3 screws as indicated in the photo. Keep the screws for reassembly.



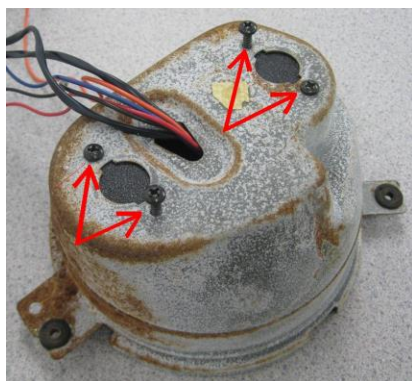
2. Remove the clock from the can. You may need to bend back the edge of the rear can for easier removal.

3. Remove the knob from the clock shaft. Hold the gear on the back while unscrewing the knob, if it does not unscrew you will need to cut the shaft. Remove the three pins holding the clear lens on by pinching slightly on the back side while pushing them out the front.

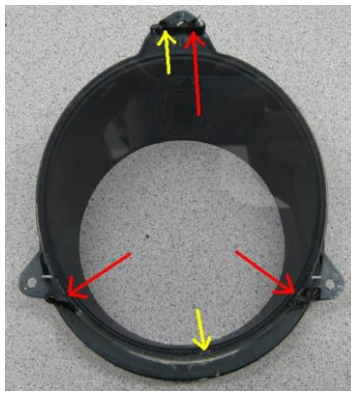


4. From the back of the can cut or grind off the melted plastic tabs that hold in the blue light covers. Remove the light covers.

5. Pass the time set switches through the hole in the center of the can followed by the four individual wires. Slide the gauge into the can making sure not to pinch the wires when it is fully installed.



6. Using the 4 included screws provided secure the clock assembly into the housing using the light cover tab holes. It is recommended to start all 4 screws then tighten in a crisscross pattern. Place a bead of silicone around the edge of the opening that the wires pass through to keep them from chaffing.



7. Position the new clear lens in place of the original using the two notches indicated with the yellow arrows for alignment. Use silicone in the areas indicated with the red arrows to retain the lens.

8. After the silicone has cured place the lens assembly back onto the clock can. You may need to re-bend the edges of the can to help retain it if you unbent them previously. Reattach the completed clock assembly back onto the bezel using the original screws.

9. Decide on a location for the time set switches. The switches will require two ¼” holes for mounting.

The Odyssey gauge series from Dakota Digital, Inc. incorporates the reliability and quality of our standard gauges, along with several unique features and easy mounting. These features include:

- Quartz accuracy.
- Night dimming feature.
- Very low standby power to prevent battery drain.
- High Visibility VFD display for sunlight readability.

The Odyssey series clock displays the current time in 12 hour format. The high brightness display matches our other Odyssey, STR, and VFD3 series gauges and has the same night brightness dimming capability.

#### **Operation:**

The gauge needs the red, orange, and black wires connected to operate. The red wire should have switched 12 volt power from an ACC. point on the fuse panel. The orange wire should have constant 12 volt power. The black wire should be connected to a good ground point. When the blue wire has 12 volts, it will dim the display for night viewing.

#### **Setting the time:**

The remote mounted red and black push buttons will be used to set the clock. The BLACK “set” button advances hours, the RED “set” button advances minutes. Each time that you make a change to either the hours or minutes, the seconds are reset to zero.

## Adjusting the accuracy:

The clock is accurate to +/-2 minutes a month as it is sent. It can be tuned for better accuracy if desired. Press and hold both of the set buttons for several seconds. The clock will display "C 0". The "C" indicates that it is in the calibration mode and the second number is the current calibration value. The calibration value indicates the number of seconds to add or subtract each day. The clock can be adjusted from +7 sec/day to -7 sec/day.

Press the minute set button to change the cal value. Press the hour set button to return to normal clock operation.

## Wiring:

- BLACK - connect to a good ground point in the vehicle.
- RED - connect to switched 12 volt power point.  
(An accessory terminal will work for this.)
- ORANGE - connect to a constant 12 volt power point.  
(This will keep the correct time.)
- BLUE - connect to the tail light circuit.

## Troubleshooting guide.

Problem	Possible cause	Solution
Clock will not light up	Red wire does not have power.	Connect to a location that has power when the key is on.
	Orange wire does not have power.	Connect to a location that has power all of the time.
	Black wire is not getting a good ground.	Connect ground to a different location.
	Power is reversed.	Connect black to negative ground, red and orange to +12V power.
Clock will not turn off when the key is off.	Clock is damaged.	Return clock for repair. (see instructions)
	The red and orange wires are reversed.	Connect the red to switched power, the orange to constant power.
Clock lights up, but does not read correctly.	Loose connection on orange power wire.	Reconnect orange wire.
	Poor ground connection.	Move ground to different location
Clock will not keep time.	Time is not set.	Set time. (see instructions)
	Clock is damaged.	Return clock for repair. (see instructions)
	Orange wire does not have constant power.	Connect to a location that has power when the key is on or off.
	Loose connection on orange power wire.	Reconnect orange wire.
Clock will not dim.	Poor ground connection.	Move ground to different location
	Blue wire is not connected correctly.	Check wiring connections.
Clock remains dim at all times.	Blue wire is getting power all of the time.	Connect blue wire to location that only has power when the headlights are on.
	Battery is very low.	Recharge or replace vehicle battery.
	Clock is damaged.	Return clock for repair. (contact factory)

## Technical specifications

Minimum operating voltage	-	7 volts
Maximum operating voltage	-	18 volts
(operating at or near maximum rating for an extended time can damage unit)		
Clock accuracy	-	±2 minute per month
Typical current draw (@ 13.8V)	-	0.13 A
Standby current draw (key off)	-	0.002 A

## **SERVICE AND REPAIR**

DAKOTA DIGITAL offers complete service and repair of its product line. In addition, technical consultation is available to help you work through any questions or problems you may be having installing one of our products. Please read through the Troubleshooting Guide. There, you will find the solution to most problems.

**Should you ever need to send the unit back for repairs, please call our technical support line, (605) 332-6513, to request a Return Merchandise Authorization number.** Package the product in a good quality box along with plenty of packing material. Ship the product by UPS or insured Parcel Post. Be sure to include the RMA number on the package, and include a complete description of the problem with RMA number, your full name and address (street address preferred), and a telephone number where you can be reached during the day. Any returns for warranty work must include a copy of the dated sales receipt from your place of purchase. Send no money. We will bill you after repair.

### **Dakota Digital 24 Month Warranty**

DAKOTA DIGITAL warrants to the ORIGINAL PURCHASER of this product that should it, under normal use and condition, be proven defective in material or workmanship within 24 MONTHS FROM THE DATE OF PURCHASE, such defect(s) will be repaired or replaced at Dakota Digital's option.

This warranty does not cover nor extend to damage to the vehicle's systems, and does not cover removal or reinstallation of the product. This Warranty does not apply to any product or part thereof which in the opinion of the Company has been damaged through alteration, improper installation, mishandling, misuse, neglect, or accident.

This Warranty is in lieu of all other expressed warranties or liabilities. Any implied warranties, including any implied warranty of merchantability, shall be limited to the duration of this written warranty. Any action for breach of any warranty hereunder, including any implied warranty of merchantability, must be brought within a period of 24 months from date of original purchase. No person or representative is authorized to assume, for Dakota Digital, any liability other than expressed herein in connection with the sale of this product.

**⚠ WARNING:** This product can expose you to chemicals including lead, which is known to the State of California to cause cancer and birth defects or other reproductive harm. For more information go to [www.P65Warnings.ca.gov](http://www.P65Warnings.ca.gov)



4510 W. 61st St. North  
Sioux Falls, SD 57107  
www.dakotadigital.com  
dakotasupport@dakotadigital.com

Phone (605) 332-6513  
Fax (605) 339-4106

Copyright 2011 - Dakota Digital, Inc.

MAN#650271