



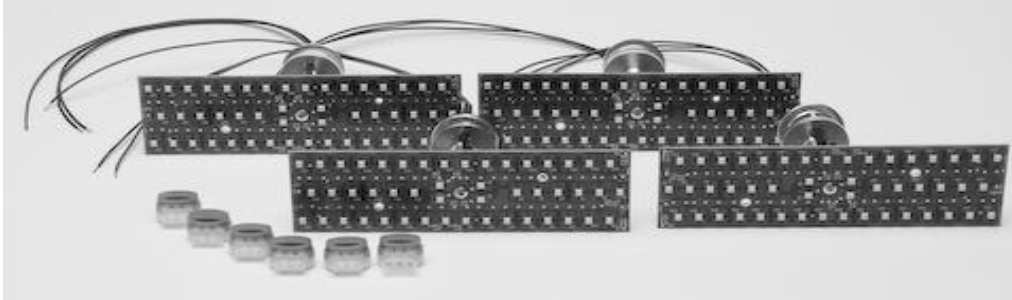
## INSTALLATION INSTRUCTIONS

### LAT-NR411

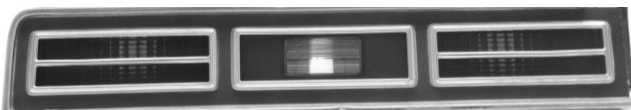
LED Tail Lights for 1974-76 Impala, 1974 Caprice

MAN#650248

#### Kit Includes:



#### Installation:



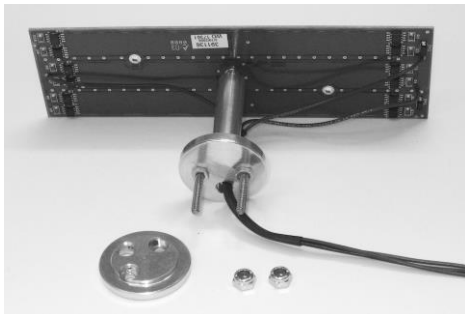
1. Remove the original bulb connectors from the bottom side of the housing.
2. Remove the plastic housing from the vehicle.
3. Remove the metal trim from the housing.



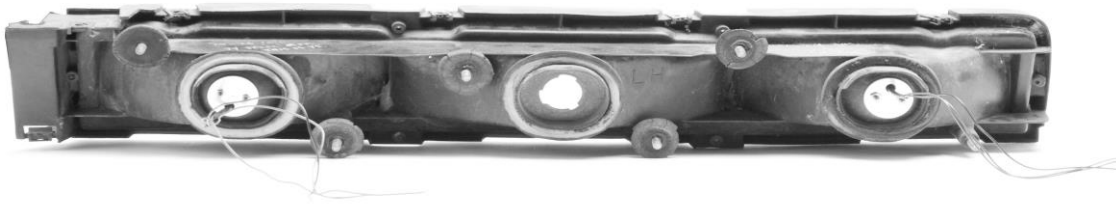
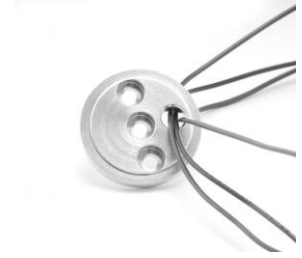
4. Remove the tail light lens by gently prying the housing away from the lens tabs.



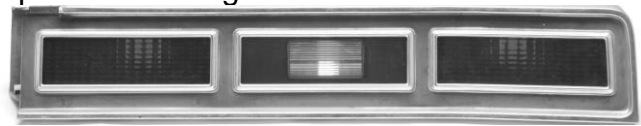
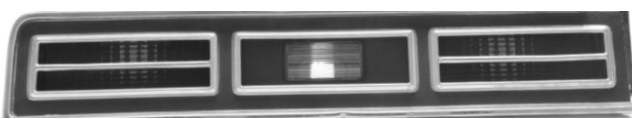
5. Now is a good time to clean the lens and housing. If lenses are in bad shape a new set is recommended.
6. Remove the round mounting plate from the bottom of the LED assembly. It is attached with two lock nuts.



7. Insert each new LED assembly through the hole where the original bulb and connector were located. Use caution when feeding the wires through the socket opening to avoid damaging the wire insulation.
8. Feed the wires through the large hole in the back plate and attach the back plate onto the back side of the housing. The flat side of the mounting plate should be toward the outside and the side with the slight raised center should go in towards the housing. This will align the mount in the original housing.
9. Secure the LED assembly into the housing with the supplied back plate and #6 lock nuts.



10. Place the original lens gasket into place and replace the tail light lens.

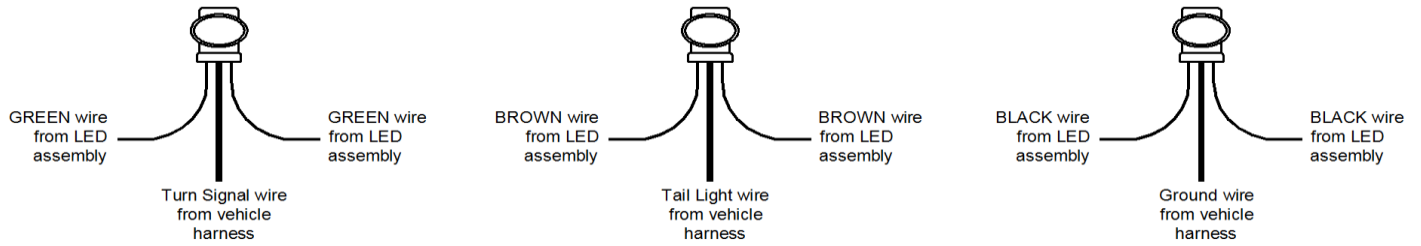


11. Cut off the existing light socket as it will not be used. Do not strip the wires. Trim the wires from LED assembly to appropriate length once mounted, making sure wires are routed cleanly and securely.
12. Use the supplied moisture resistant pigtail connectors\* to attach the wires from the new LED assembly to the existing vehicle harness. Insert the appropriate wire from vehicle harness and mating LED assembly wire into a connector and crimp following instructions below.

\*For the best connection, soldering is recommended. But to simplify installation, the supplied connectors will provide a fast weather resistant connection.

**The correct crimp method for the supplied connectors is:**

- 1.) Insert **UNSTRIPPED** wires into the connector and ensure they are all they way in by observing the clear bottom of the connector to see the wires are touching the end.
- 2.) Use pliers to push the blue cap down flush with the edge of the clear body, completing the connection. The connection will only be correct if pressed firmly down with pliers.



	LED light	Vehicle harness
Tail light	Brown	Brown
Driver's Turn	Green	Yellow
Passenger's Turn	Green	Green
Ground	Black	Black or chassis

13. Repeat for the other side.
14. Test the tail lights, brake lights, and turn signals. If the turn signals do not flash you will need to upgrade your flasher. If you are replacing only the rear turn signals you should be able to use a heavy duty electronic flasher from your local parts store. If you are replacing both front and rear or do not have front bulbs you will need a no-load flasher, Dakota Digital part number LAT-NLF.

## **SERVICE AND REPAIR**

DAKOTA DIGITAL offers complete service and repair of its product line. In addition, technical consultation is available to help you work through any questions or problems you may be having installing one of our products. Please read through the Troubleshooting Guide. There, you will find the solution to most problems. **Should you ever need to send the unit back for repairs, please call our technical support line, (605) 332-6513, to request a Return Merchandise Authorization number.** Package the product in a good quality box along with plenty of packing material. Ship the product by UPS or insured Parcel Post. Be sure to include the RMA number on the package, and include a complete description of the problem with RMA number, your full name and address (street address preferred), and a telephone number where you can be reached during the day. Any returns for warranty work must include a copy of the dated sales receipt from your place of purchase. Send no money. We will bill you after repair.

### **Dakota Digital Limited Lifetime Warranty**

DAKOTA DIGITAL warrants to the ORIGINAL PURCHASER of this product that should it, under normal use and condition, be proven defective in material or workmanship for the lifetime of the original vehicle it was installed in, such defect(s) will be repaired or replaced at Dakota Digital's option.

This warranty does not cover nor extend to damage to the vehicle's systems, and does not cover removal or reinstallation of the product. This Warranty does not apply to any product or part thereof which in the opinion of the Company has been damaged through alteration, improper installation, mishandling, misuse, neglect, or accident.

This Warranty is in lieu of all other expressed warranties or liabilities. Any implied warranties, including any implied warranty of merchantability, shall be limited to the duration of this written warranty. No person or representative is authorized to assume, for Dakota Digital, any liability other than expressed herein in connection with the sale of this product.

**⚠ WARNING:** This product can expose you to chemicals including lead, which is known to the State of California to cause cancer and birth defects or other reproductive harm. For more information go to [www.P65Warnings.ca.gov](http://www.P65Warnings.ca.gov)



**4510 W. 61st St. North**  
**Sioux Falls, SD 57107**  
www.dakotadigital.com  
dakotasupport@dakotadigital.com

Phone (605) 332-6513  
Fax (605) 339-4106

© Copyright 2023 - Dakota Digital