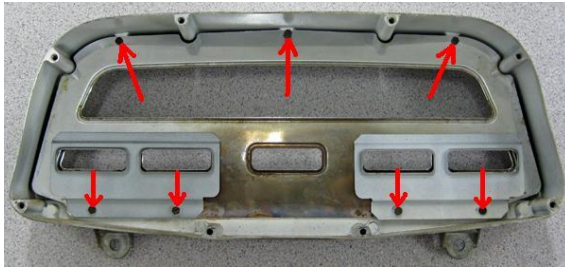
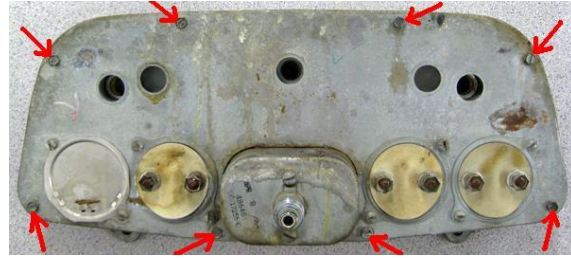


# 1954 Mercury Dakota Digital Gauge Installation

This sheet covers the installation of the Dakota Digital gauge kit into the original cluster.



1. Remove the cluster from the vehicle.
2. Remove the 8 screws, as indicated with arrows in the photo at right, to remove the original back plate with attached gauges from the bezel. The screws will be reused; the back plate will not be and can be set aside.



3. Remove the 7 screws, as indicated with arrows in the photo at left, which hold the gauge separator plate and glass lens into the bezel. The screws will be reused to hold the new colored lens in place. The separator plate and glass lens will not be and can be set aside.

4. Install the colored lens into the bezel and retain with the screws holding the original gauge separator plate and lens.  
**DO NOT OVER TIGHTEN THE SCREWS.**  
Over tightening of the screws may cause the lens to crack.



5. Using the screws that held on the original back plate and gauges, attach the new Dakota Digital gauge assembly to the bezel.

See the main instruction manual for the remainder of the installation.

**WARNING:** This product can expose you to chemicals including lead, which is known to the State of California to cause cancer and birth defects or other reproductive harm. For more information go to [www.P65Warnings.ca.gov](http://www.P65Warnings.ca.gov)



4510 W. 61st St. North  
Sioux Falls, SD 57107  
[www.dakotadigital.com](http://www.dakotadigital.com)  
[dakotasupport@dakotadigital.com](mailto:dakotasupport@dakotadigital.com)

Phone (605) 332-6513  
Fax (605) 339-4106

Copyright 2011 - Dakota Digital, Inc.