



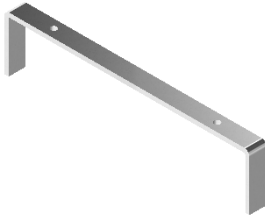
# VHX-69C-CAC

Dakota Digital VHX Instrument Installation  
For '69 Chevy Camaro systems with Console Gauges

Your new VHX-69C-CAC kit includes:

### VHX Displays

**Mounting Bracket**



**Universal Sensor Pack**



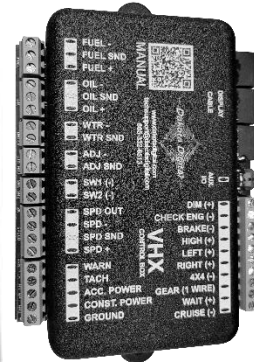
**Installation Manuals**



**24" CAT5 Cable**



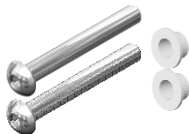
**Switch Assembly**



**2x 36" CAT5 Cables**

**Control Box**

**2x 10-32 x 1.5" Screws w/  
Nylon Shoulder Washers**



**2x 10-32 x 1" Screws  
w/ Nylon Washers**



**2x Nylon  
Thumb Nuts**



**2x Flat Steel  
Spring Nuts**



**Foam Tape**



## Installation

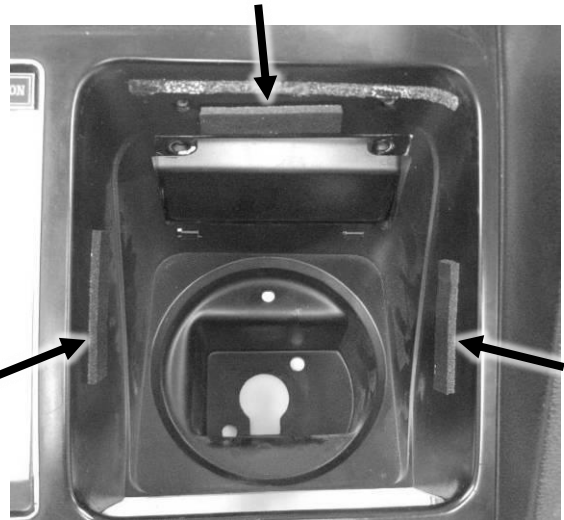
1. Remove the clear lenses, light bulbs, indicator light panels, and gauge internals; they are held into the housing with nuts from the backside. It may be possible to access all the fasteners with the dash carrier installed; removing the entire assembly may not be necessary.



2. Begin with the speedometer installation first; located in the left side opening in the factory dash. Cut the supplied **Foam Tape** into three 2" long strips. Install the foam strips on the top and sides of each opening about 1/2" down from the face of the housing.

This foam will provide a cushion around the VHX display to form a tight, rattle-free fit.

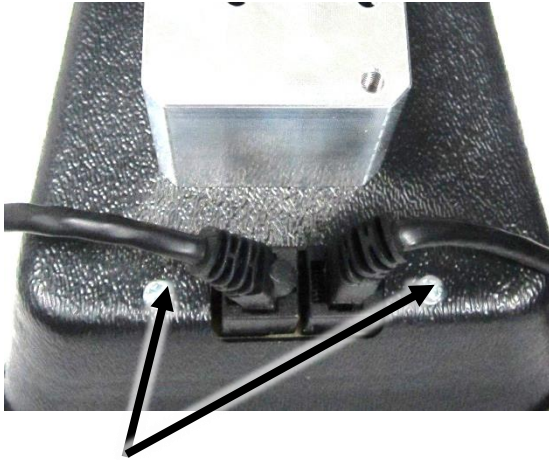
Foam Tape



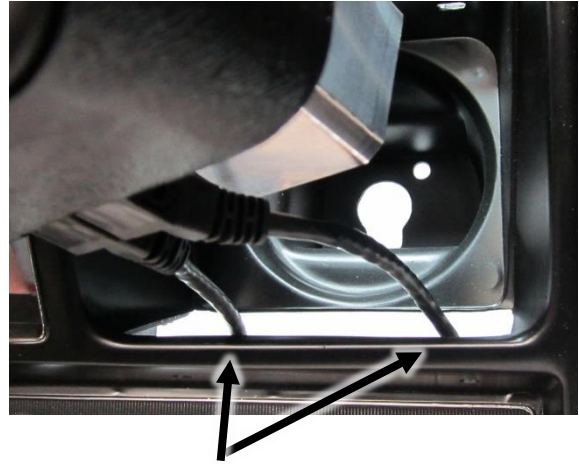
3. The speed gauge has two CAT5 ports on the back side. Connect the **24" CAT5 Cable** to either port and one of the **36" CAT5 Cables** to the other port.



4. Remove the protective lens tape and insert the VHX speedometer into the left side of the factory housing. You will need to fold the CAT5 cables and route them through the opening where the original indicator lights were mounted to get the VHX bezel to sit flush with the housing. As the gauge goes in, route the CAT5 cables through the opening in the bottom of the housing, keeping in mind the 24" cable needs to be routed to the other side where it will connect to the tachometer.



Pre-bend cables to the side before installing so unit will sit flush once inserted into dash

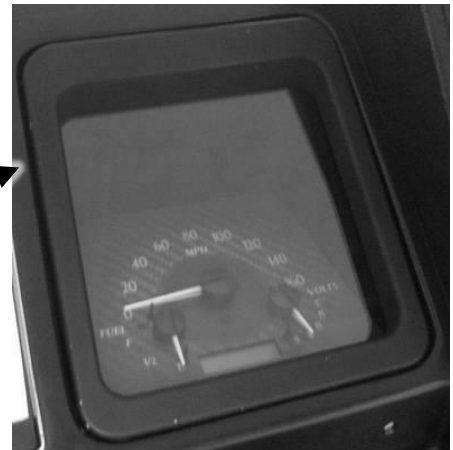


Cables routed through indicator light opening

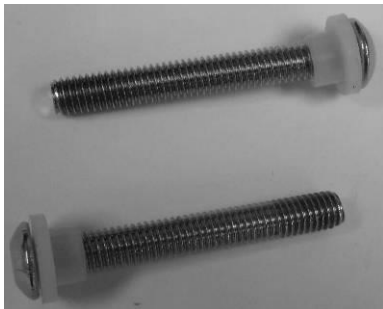


**INCORRECT INSTALLATION:**  
Cable will be pinched by the pull block

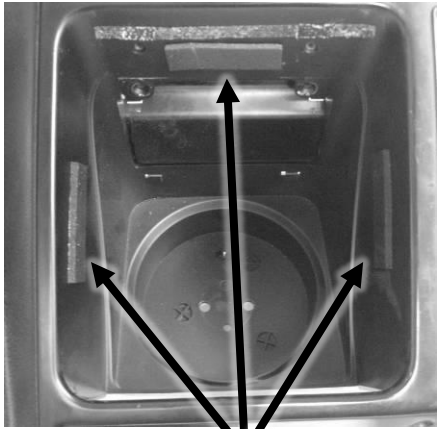
Bezel flush with housing once fully seated in housing and cable properly routed



5. Using the two provided **10-32 x 1.5" Screws with Nylon Shoulder Washers**, secure the speedometer assembly to the housing. Start the screws into the back of the factory housing and into the pull-block on the back of the gauge assembly. Tighten with a 1/8" Allen wrench.



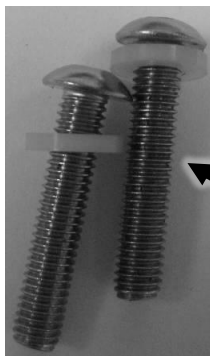
6. To install the tachometer, repeat the steps above, making sure to use the shorter screws and plastic washers. The tachometer uses two **10-32 x 1" Screws** with **Flat Nylon Washers** to secure the gauge. Be sure to connect the 24" CAT5 cable from the speedometer to the tachometer.



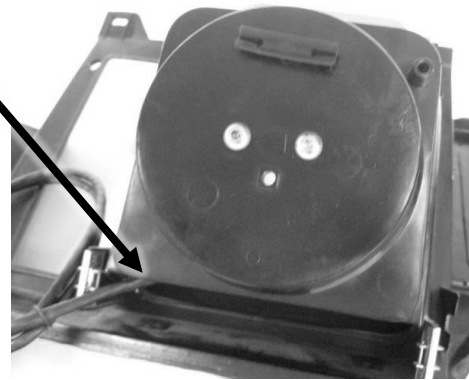
Foam Tape



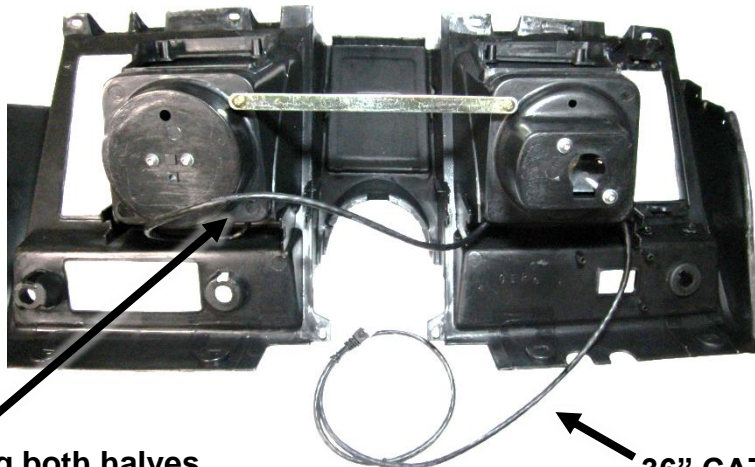
Cable routed through indicator light opening



Mounting screws



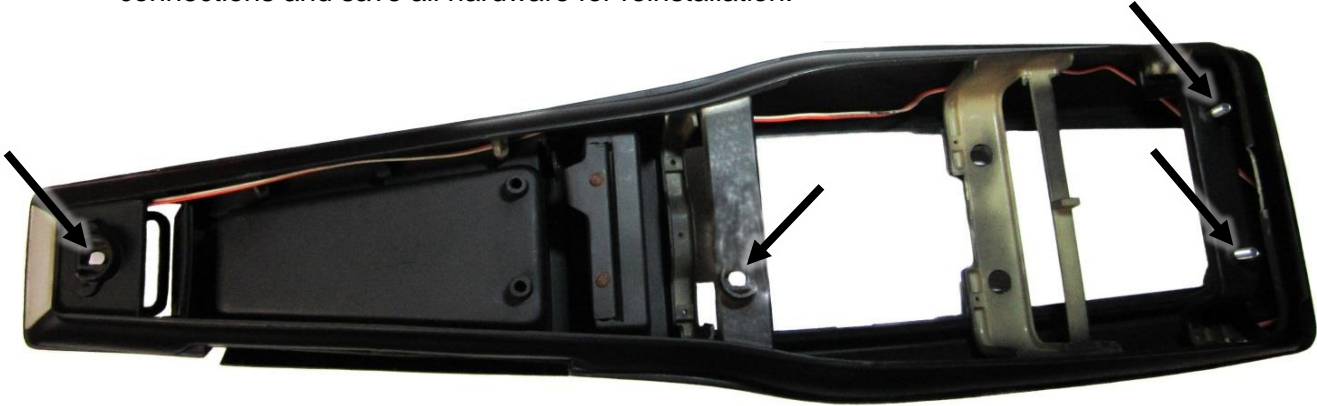
7. Both cables should be routed through the stock indicator light opening; the system is now ready for re-installation into the dash if it was removed.



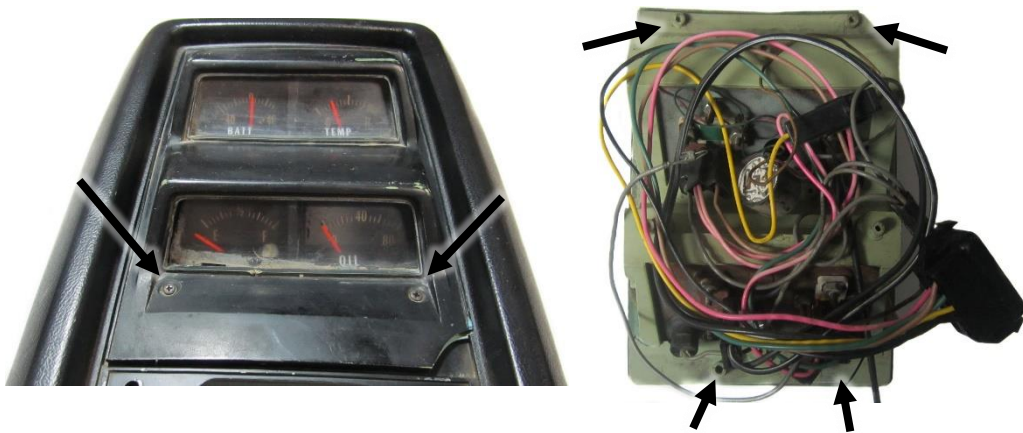
24" CAT5 connecting both halves

36" CAT5 to control box

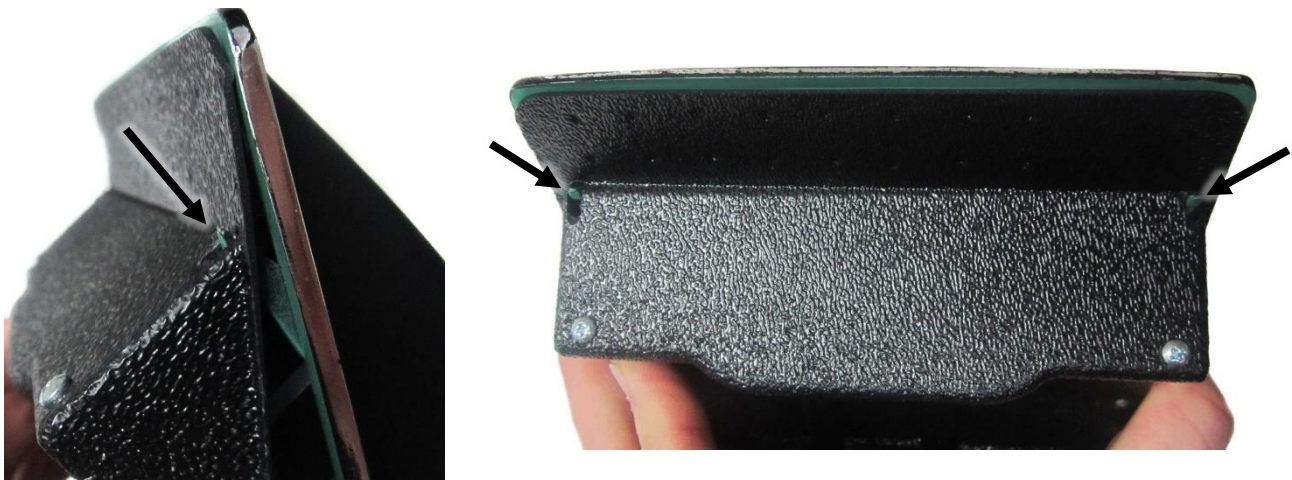
8. Next, the entire console will need to be removed. Looking at the picture of the console from the bottom, you can see there are four (4) mounting points. Make sure to disconnect all electrical connections and save all hardware for reinstallation.



9. Remove the gauge cluster from the console by removing the four (4) screws holding the cluster to the console. Also remove the top screws that hold the bezel to the housing as shown in the picture. The bezel and screws will be reused for the new gauges.



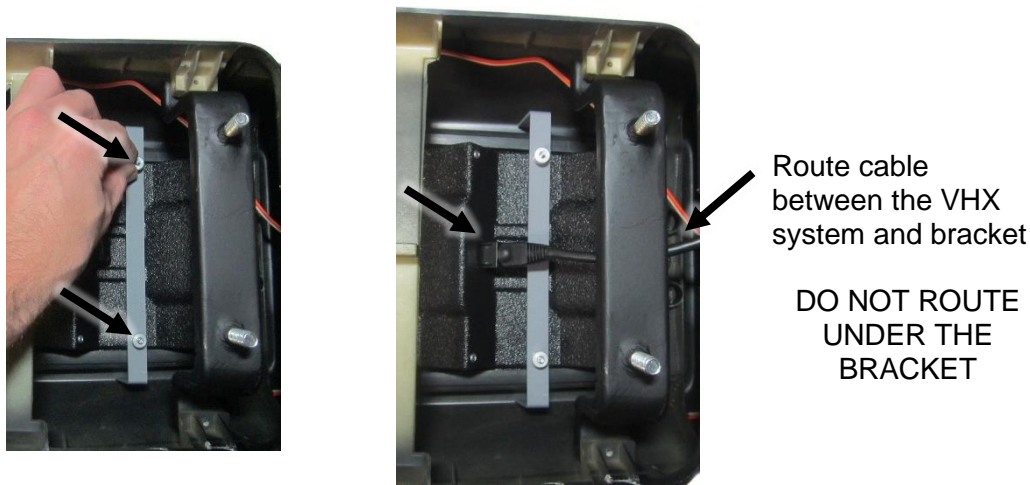
10. Place the bezel over the VHX system and be sure to align the tabs from the bezel into the slots cut into the VHX housing as shown.



11. Attach the bezel to the VHX cluster using the original screws from disassembly and the two (2) **Flat Spring Nuts** provided.



12. With the bezel mounted to the VHX system, place the cluster back into the console and attach the **Mounting Bracket** to the two (2) mounting studs using the provided **Nylon Thumb Nuts** to secure the cluster to the console. Also connect the final **36" CAT5 Cable** to the back of the VHX system. The console is now ready to reinstall back into the vehicle.



13. Carefully route both CAT5 cables to the control box and connect them to two of the three jacks on the control box. It does not matter which cable goes where; all the jacks are the same.



14. Display installation is now complete, refer to the main manual for wiring instructions to complete the VHX installation.



**⚠ WARNING:** This product can expose you to chemicals including lead, which is known to the State of California to cause cancer and birth defects or other reproductive harm. For more information go to [www.P65Warnings.ca.gov](http://www.P65Warnings.ca.gov)



4510 W. 61st St. North  
Sioux Falls, SD 57107  
www.dakotadigital.com  
dakotasupport@dakotadigital.com

Phone (605) 332-6513  
Fax (605) 339-4106

© Copyright 2024 - Dakota Digital

Manual # 650423B