



VHX-69C-CAM

Dakota Digital VHX Instrument Installation
For '69 Chevy Camaro systems

Your new VHX-69C-CAM kit includes:

VHX Displays



Universal Sensor Pack



Installation Manuals



24" CAT5 Cable



Switch Assembly

36" CAT5 Cable

Control Box

2x 10-32 x 1" Screws w/ Nylon Washers



2x 10-32 x 1.5" Screws w/ Nylon Shoulder Washers



Foam Tape



Installation

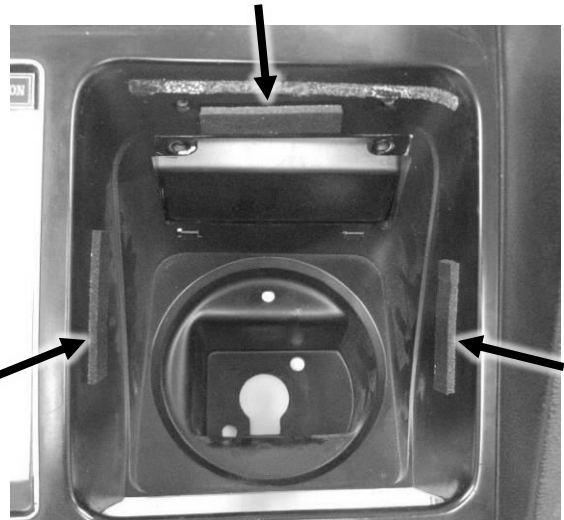
1. Remove the clear lenses, light bulbs, indicator light panels, and gauge internals; they are held into the housing with nuts from the backside. It may be possible to access all the fasteners with the dash carrier installed; removing the entire assembly may not be necessary.



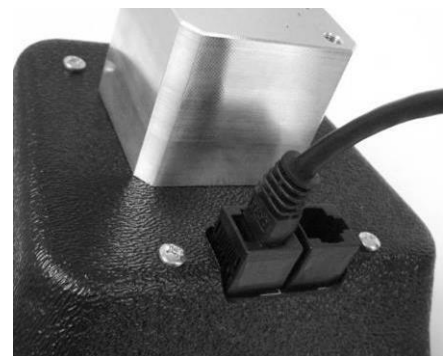
2. Begin with the speedometer installation first; located in the left side opening in the factory dash. Cut the supplied **Foam Tape** into three 2" long strips. Install the foam strips on the top and sides of each opening about 1/2" down from the face of the housing.

This foam will provide a cushion around the VHX display to form a tight, rattle-free fit.

Foam Tape



3. Connect one of the provided **CAT5 Cables** to either of the connectors on the back side of the VHX speedometer display. The second connector should be left open.

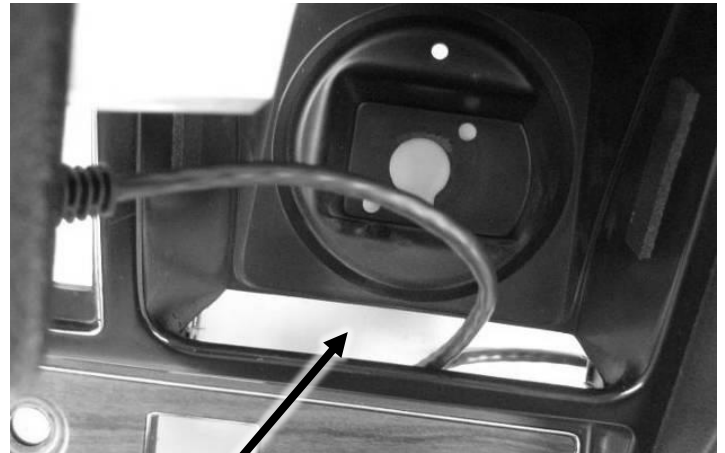


4. Remove the protective lens tape and insert the VHX speedometer into the left side of the factory housing. For the VHX bezel to sit flush with the housing, the CAT5 cable will need to be folded and routed through the opening where the original indicator lights were mounted. As the gauge goes in, route the CAT5 cable through the opening in the bottom of the housing, keeping in mind the cable will need to reach the desired control box mounting location.



Pre-bend cable to side before installing so unit will sit flush once inserted into dash

Leave open

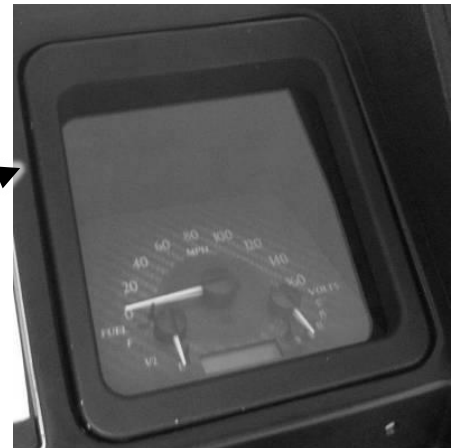


Cable routed through indicator light opening

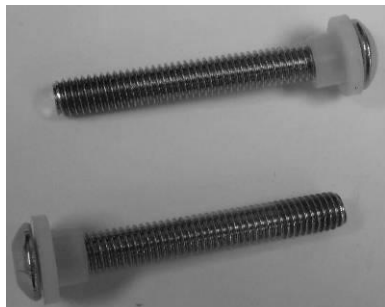


INCORRECT INSTALLATION:
Cable will be pinched by the pull block.

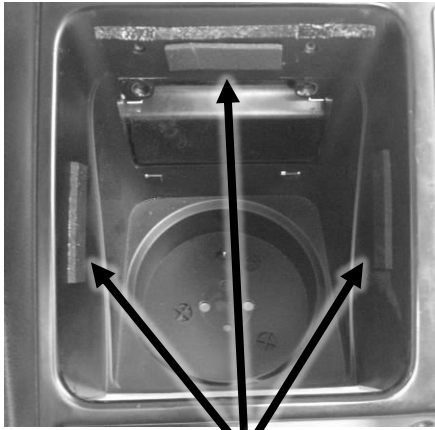
Bezel flush with housing once fully seated in housing and cable properly routed



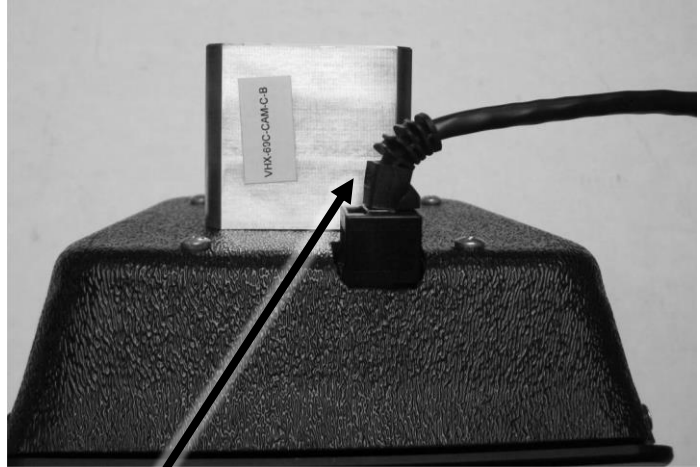
5. Using the two provided **10-32 x 1.5" Screws with Nylon Shoulder Washers**, secure the speedometer assembly to the housing. Start the screws into the back of the factory housing and into the pull-block on the back of the gauge assembly. Tighten with a 1/8" Allen wrench.



6. To install the tachometer, repeat the steps above, making sure to use the shorter screws and plastic washers. The tachometer uses two **10-32 x 1" Screws** with **Flat Nylon Washers** to secure the gauge.



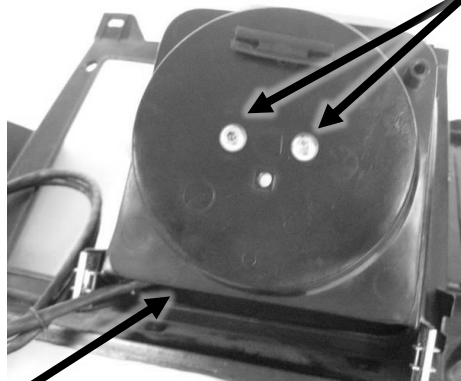
Foam Tape



Pre-bend cable to side before installing for unit to sit flush once inserted into dash



Cable routed through indicator light opening



Mounting screws



7. Both cables should be routed through the stock indicator light opening; the system is now ready for re-installation into the dash if it was removed.



8. As the system is installed, route both CAT5 cables to the control box and connect them to two of the three jacks on the control box. It does not matter which cable goes where; all the jacks are the same.



9. Display installation is now complete, refer to the main manual for wiring instructions to complete the VHX installation.



⚠ WARNING: This product can expose you to chemicals including lead, which is known to the State of California to cause cancer and birth defects or other reproductive harm. For more information go to www.P65Warnings.ca.gov



4510 W. 61st St. North
Sioux Falls, SD 57107
www.dakotadigital.com
dakotasupport@dakotadigital.com

Phone (605) 332-6513
Fax (605) 339-4106

© Copyright 2024 - Dakota Digital