



VHX-70P-FIR

Dakota Digital VHX Instrument Installation
For 1970-'81 Pontiac Firebird

Your new VHX-70P-FIR kit includes:

VHX Display



Universal Sender Pack



Switch Assembly

Installation Manuals



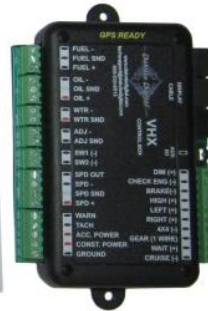
36" CAT5 Cable

Mounting Cups



(10) Nylon Thumb Nuts

12" CAT5 Cable



Control Box

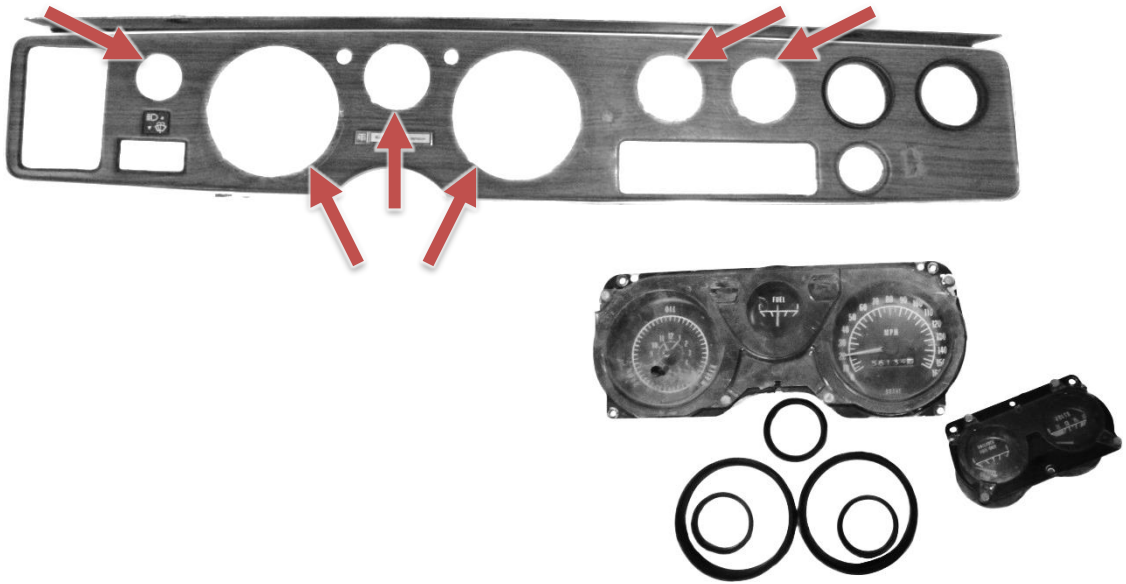
(2) Turn Signal Harnesses

Installation

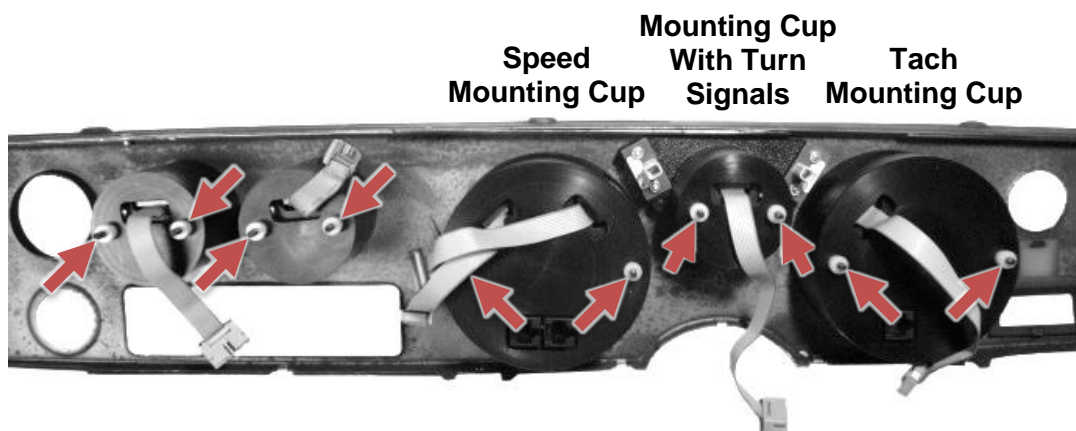
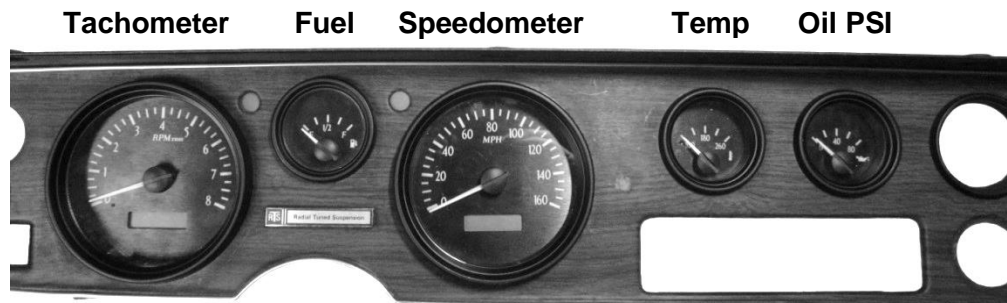
1. First, remove the stock gauge bezel from the dash. Retain the factory hardware for reassembly.



- Remove the stock gauges from the dash and the gauge trim rings from the bezel. These items will not be reused and can be set aside.

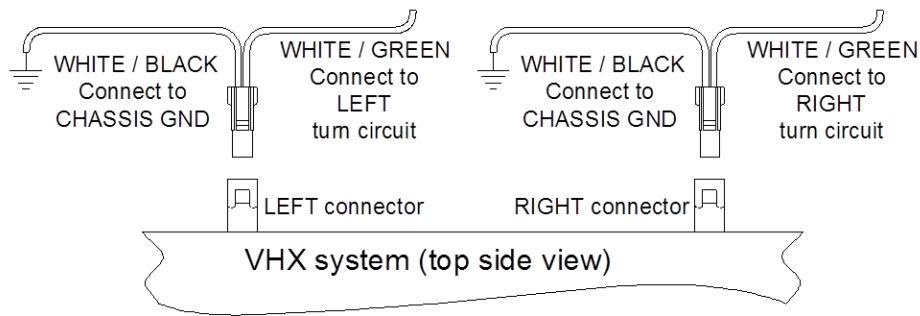


- You are now ready to mount the gauges; slide the gauge into the bezel from the front and place the appropriate mounting cup over the back of the gauge. Make sure to pass the ribbon cables through the openings in the mounting cups. Use the provided thumb nuts to secure the gauge in place. Make sure all gauges are straight in the bezel before final torquing. **If you have a three-gauge bezel, you may set two gauges aside and not use them or make holes for the additional gauges.**

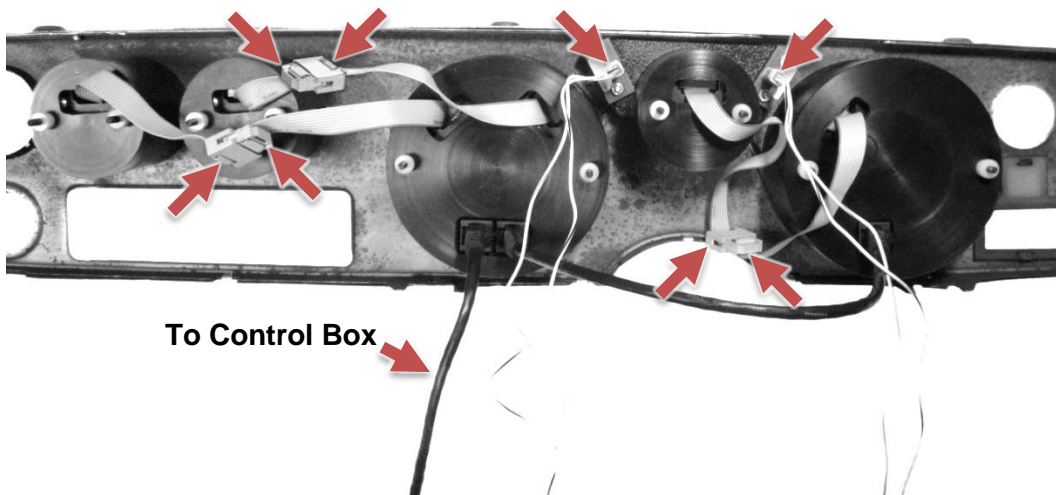


4. This system comes with two options for the turn signals. You can either have arrows located in the faceplate of your new VHX display, and/or arrows in your vehicle's stock turn signal locations. To use the new faceplate arrows, follow the wiring instructions for the turn signals found in the main VHX manual.

To optionally use the stock turn signal arrows, do not wire the turn signals to the VHX control box. Instead, use the two provided two-wire harnesses. The harnesses plug directly into connectors on the back side of your new VHX system. Connect the wires from these harnesses to your turn signal circuit and ground as shown below. Doing this will light green LED bulbs, located in the original locations of your dash panel, when turn signals are active. Make sure to check left and right to verify they are wired correctly.



5. Next, you will need to make connections with the provided CAT5 cables, ribbon cables, and harnesses. Attach one end of the provided 36" CAT5 cable to the back of the VHX system Speedometer and carefully route the other end to the control box mounting location. One end of the 12" CAT5 cable goes to the Speedometer and the other end to the Tachometer. With the ribbon cables; match the ends with the same label together. Attach the two-wire turn signal harnesses to the green turn signal boards.



- Carefully re-install the dash bezel with the mounted VHX system into the car using factory hardware and refer to the main manual for wiring instructions to complete the VHX installation.



⚠ WARNING: This product can expose you to chemicals including lead, which is known to the State of California to cause cancer and birth defects or other reproductive harm. For more information go to www.P65Warnings.ca.gov



4510 W. 61st St. North
Sioux Falls, SD 57107
www.dakotadigital.com
dakotasupport@dakotadigital.com

Phone (605) 332-6513
Fax (605) 339-4106

© Copyright 2022 - Dakota Digital