

TECH

Dakota Digital Blue LED Gauge Array

Staff Report - Photos by The Maverick Camera Crew

This new Dakota Digital gauge kit has gauge numerals that are a bright LED blue, and very easy on the eyes. An automatic dimming function reduces the light output for when you're riding in the dark. Though digital gauges are not new by any stretch of the imagination, these new bright blue LED Dakota Digital gauges sure are! And the gauges aren't just another set of pretty faces with lighted numbers—they have brains.

The latest programmable Dakota Digital gauges have functions far beyond what is available from the stock Harley-Davidson gauges. For instance, the gauges installed here can provide the rider with information on the elapsed times and speed through a 1/4 mile blast, functionality that many of us will find very useful with our hot rod Baggers. The tachometer has an easy-to-read clock function, as well as prominently displayed RPM information. Other custom features include:

- **Speedometer:** Programmable speed calibration, performance menu, dual trip meters, odometer and countdown mileage.
- **Tachometer:** Programmable tachometer, clock, gear selection, cruise indicator, ABS indicator light and high RPM recall.
- **Oil Pressure:** A programmable flashing warning point uses either the OE sensor or a Dakota Digital sensor for higher pressure.
- **Oil Temperature:** Programmable warning point. (The kit includes a new ready to be installed DD sensor.)
- **Voltage-Charging System:** Programmable flashing warning point.
- **Fuel Level:** Using the factory sensor, the unit has a low-fuel warning and can be programmed for virtually any custom fuel-sending unit.
- **Night Riding:** Each gauge has an automatic night dimmer controlled by a hidden sensor in the tachometer face.

Follow along as we install the latest in Dakota Digital technology (part #MCL-3006) on a 2007 Electra Glide Standard.



Perhaps not very impressive sitting in the package, these Dakota Digital blue gauges will knock you socks off when the power is applied.



The stock analog Harley-Davidson gauges do the job, but we can do better with Dakota Digital's help.



After loosening and removing the outer fairing, unplug the headlight.



Remove the seat to access the battery. Disconnect the negative terminal for safety.

Blue LED Gauge Array



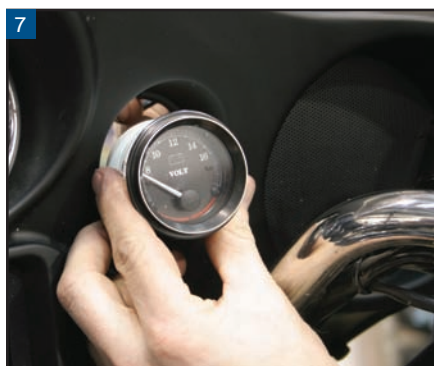
Unplug the cables from the stock gas gauge (located on the lower left on the instrument panel). Next, loosen the hardware holding the gauge bracket in place and remove the retaining bracket and gas gauge.



The Dakota Digital gauges are designed to fit perfectly into the stock retaining brackets.



Install the digital gas gauge and tighten the retaining hardware. Plug the data plug in, leaving the illumination plug that powers the stock gauge lighting bulb loose.



Repeat steps 4-6 to install the new digital voltmeter.

"RIDING FREE"
MEANS BEING WORRY FREE
 MEANS BEING MOBBY FREE

DD6
 DIRECT DRIVE 6-SPEED

Quiet, efficient, smooth, reliable and perfect for touring: We make the well-known, time (and mileage) proven Direct Drive 6-speed that is exalted by seasoned touring bike riders world-wide.

Appx. 500 RPM Drop for 1990-2006 Big Twin on the highway.

FF **FF** **FF** **FF**

The New BAKER King Kong Klutch (1990-2006 Big Twin) Function-Formed™ FL Oil Spout (1993-2006 FL) New FL "PlusOne" 5-Quart Oil Pan (1999-Up FLT) BAKER Hydraulic End Cover (1990-2006 Big Twin)

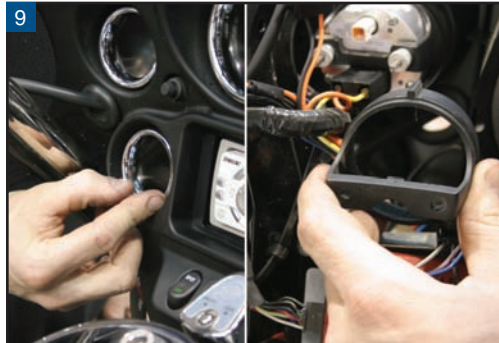
FOR QUESTIONS, ORDERS AND SUPPORT ★ TOLL FREE 1-877-640-2004 ★ WWW.BAKERDRIVETRAIN.COM

THE DRIVETRAIN AUTHORITY BAKER DRIVETRAIN
 PREMIUM DRIVETRAIN INNOVATIONS FOR AMERICAN MOTORCYCLES

TECH



8 Remove the lower left plastic dummy cover on the dash.



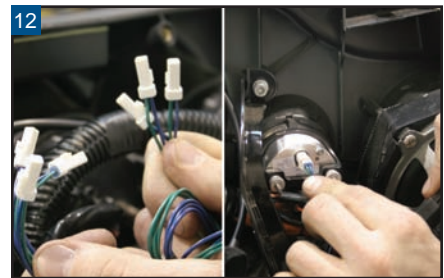
9 Install the digital oil temperature gauge in this slot, using a new gauge retaining bracket. Do the same thing on the lower right gauge slot, which will host the oil pressure gauge. The OE idiot light will still function as normal. This gauge will get its signal from the existing wire loom conductor unused until now.



10 Like the previous gauges, the speedometer and tachometer are just as easy to install...



11 ...just make sure the OE weather seal is removed and properly positioned on the new digital gauges.



12 Connect the dimmer wire loom included in the kit to each of the new digital gauges.

BLACK & CHROME AT HOGPRO

CANOGA PARK, CALIFORNIA



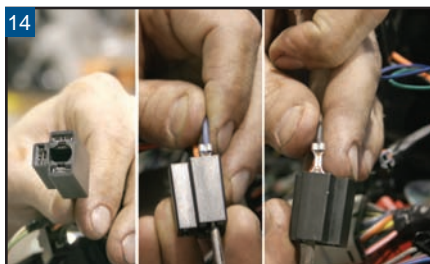
- 12 DESIGNS ALWAYS IN STOCK
- USA'S #1 VOLUME RETAILER
- TIRE MOUNTING, BALANCING AND CRATING AVAILABLE!

WWW.HOGPRO.COM

TOLL FREE ORDER LINE : 877.446.4776
8847 CANOGA AVE., CANOGA PARK, CA 91304



13 Remove the OE oil tank plug from the under-slung oil bag and install the Dakota sensor-sender in its place.



14 To connect the oil temperature gauge, follow the detailed instructions to make modifications to the factory wiring.



15 Time to plug in the headlight. Reinstall the outer fairing, reconnect the battery and test the new gauges.



Hopefully the magazine print will give justice to the deep blue glow of the new Dakota Digital LED gauge array. Our Bagger's rider now has more functions than he'll know what to do with.

Dakota Digital
Blue LED Gauge Array
Part #MCL-3006

800.593.4160
www.dakotadigital.com



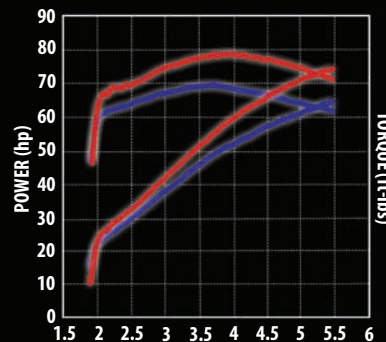
THE NEW STANDARD IN PERFORMANCE INDUCTION

S&S® Single Bore Tuned Induction



Flow enhanced intake design
Substantial filter surface area increase
Fits carbureted and fuel-injected models
Increases performance across entire powerband
Three finishes available, black, polished and natural

* Dyna™ is a trademark of Harley-Davidson® Motor Company.



■ DYNORUN_009 2006 Dyna™ 88" S&S Tuned Ind. Max Power=73.63 Max Torque=78.03
■ DYNORUN_009 2006 Dyna™ 88" Stock Induction Max Power=64.83 Max Torque=68.77

Bracket \$374.95 (PN 17-1046/47)
Chrome intake \$364.95 (PN 17-1005)
MSRP for pictured product \$739.90



S&S Cycle, Inc.
235 Causeway Blvd.
La Crosse, WI 54603
608-627-1497
www.sscycle.com