

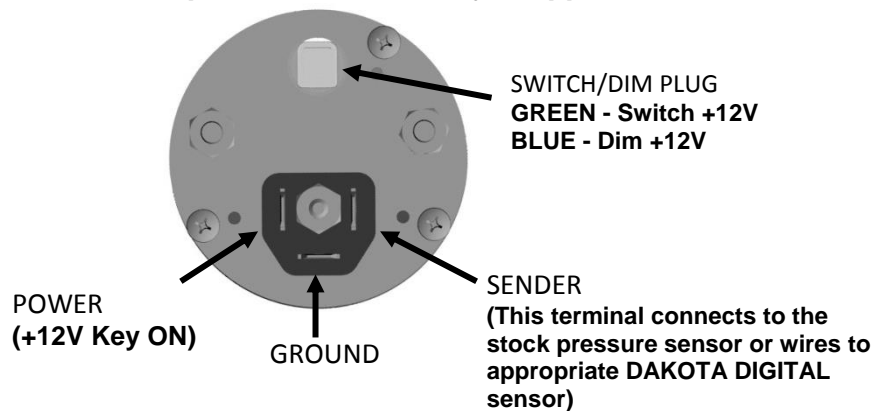


MCL-3000 SERIES OIL PRESSURE PART# MCL-3K-OIL

Thank you for purchasing the Dakota Digital MCL-3K-OIL gauge for your Harley Davidson Touring bike. This gauge is designed to be a direct, plug in replacement for all touring models from 1996 and up. This is part of a six gauge package for touring models so you can add additional gauges as you choose.

The MCL-3K-OIL gauge can be set for two stock Harley pressure senders, '96-'98 and '99-up model years. There is a display update setting for how fast the numbers will change, as well as a user settable low and high pressure warning points. When a warning condition is reached, the gauge will flash the reading as a warning indicator. For higher pressure and more accurate pressure readings, one of two Dakota Digital senders may be used: 0-75 psi SEN-1032, or 0-150 psi SEN-1031.

*****Please read *SETUP* section to select correct pressure sensor for you application.**



INSTALLATION

First read and familiarize yourself with all of the components and this manual. The first step is to remove the seat and disconnect the negative side of the battery, as with any electronic install. Once the battery is disconnected you are ready to start.

REMOVAL OF FACTORY GAUGES

Remove the outer fairing; this will vary from model to model, please follow the service manual to expose the wiring and gauges. Don't be alarmed by the amount of wires behind the fairing, this is a direct plug in kit and these detailed instructions will guide you through it.



Pic of street glide with outer fairing removed



Pic of road glide with outer fairing removed

All of the small gauges, fuel, volts, oil, and air temp have two plugs. One is for illumination the other is for the gauge power, ground, and sensor signal. The illumination harness, two pins (orange and

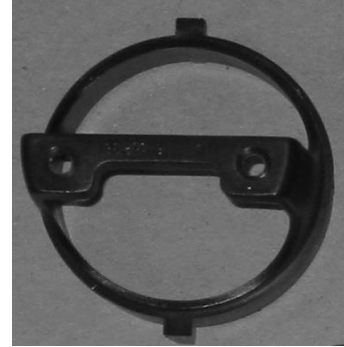
black wires), and will not be reused and can hang freely inside the fairing with the bulb removed, or can be secured to the other gauge wires to clean things up. The three pin connector from the stock gauge will be used to connect the new Dakota Digital MCL-3K gauge. Unplug connectors at the back of the gauge, then remove the two 5/16" nuts holding the clamps onto each small gauge and remove the gauges.

*****New nuts for the small gauges are included in the hardware pack DO NOT reuse the stock nuts for the new gauges; they are not the same thread.**

Once the gauge is removed, save the clamp as it will be reused with the new MCL gauge.



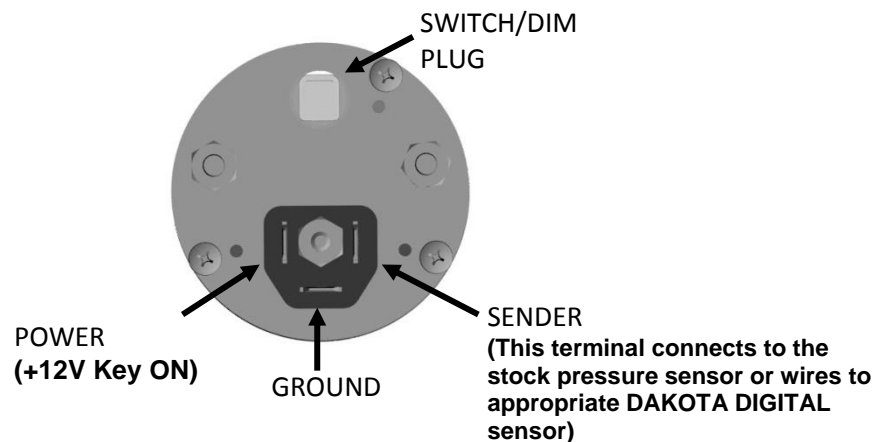
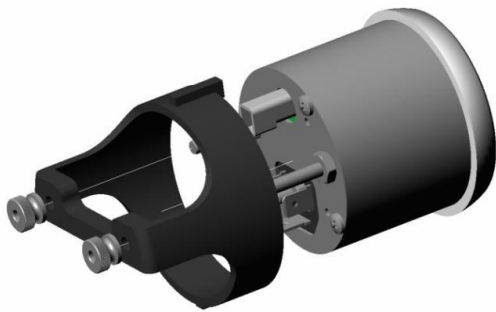
Remove the small gauge with 5/16" wrench or nut driver



Save Clamp, and reuse for install

INSTALLATION OF NEW MCL-3K-OIL GAUGE

Install the new gauge into the fairing using the original clamp, along with the supplied nuts. Be sure the alignment tab on the clamp lines up with the notches in the fairing when tightening the clamp back up.



WIRING

The three tab connector toward the bottom of the back side of the MCL-3K gauge is designed to plug directly into the stock harness. This will provide the gauge power, ground, and sensor connection. If the wiring harness plug is not available, wire according to the drawing on next page. Standard 1/4" female spade connectors can be used to make a connection to the gauge.

The second connector toward the top of the back side of the gauge is where the supplied Switch/Dim harness connects. Both inputs are active high and are "triggered" when there is +12V on either wire.

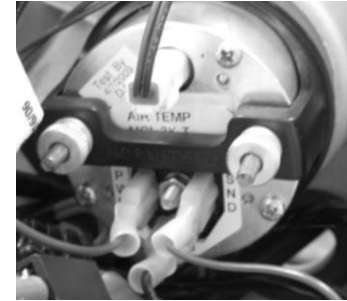
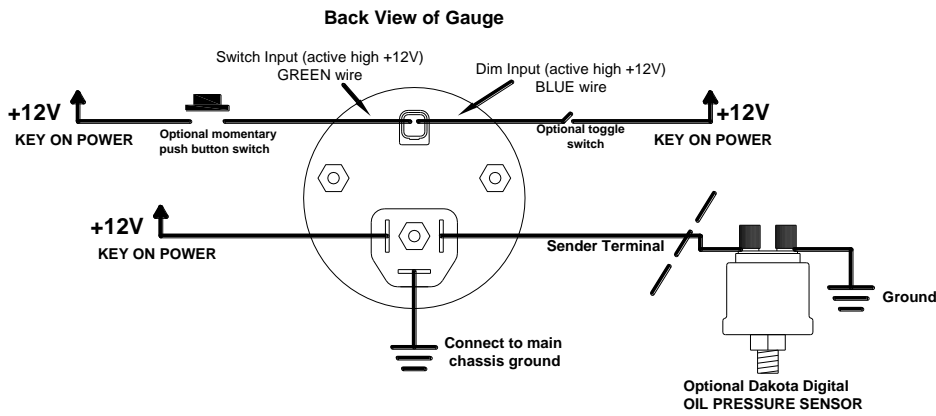
BLUE Wire (Dim Input)

The BLUE wire is used for optional night time dimming function. When this wire is held high, +12V, the gauge will dim to about 1/2 brightness.

GREEN Wire (Switch Input)

The GREEN wire is used for a switch input for entering setup. This wire can be wired to a momentary push button switch and the other side of the switch to +12V. The wire can also be stripped back and touched to +12V to enter setup and then taped off once complete.

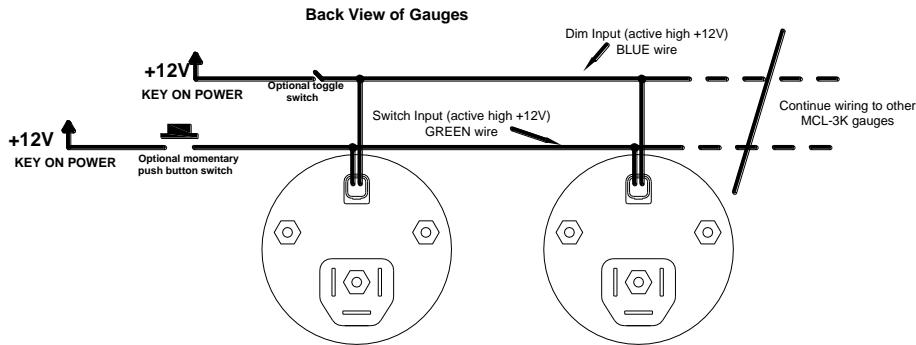
(Wiring diagram on next page)



Connection shown with optional spade terminals

If you are installing multiple MCL-3K gauges, you can tie the GREEN wires together and then to one switch. The same is true for the BLUE wire, wire all of them to one switch.

If you have an MCL-3K Tachometer, it will actually serve as the dimming “switch”. The BLUE wire on any of the MCL-3K Tachs will provide a +12V output for the dimming function. The gauge has a light sensor behind the lens and when the ambient light is dim or low it will “turn on” the output and supply +12V to the BLUE wire. You will not need to wire in a toggle switch if you have an MCL-3K tachometer and choose to wire it this way.



GAUGE SETUP

The oil pressure gauge setup has options for sensor selection, update rate, and a low pressure warning point. **YOU MUST** at least select or make sure the gauge is set for your pressure sensor or the gauge will not read correctly.

The GREEN switch input wire, in the two pin connector, is used to enter setup. If you are only installing one or a couple Dakota Digital MCL-3K gauges set up may seem a little strange since they are designed to work as a set, however you’ll simply cycle through a few screens to get to the desired gauge. The table below shows what will be on the gauge with each button press, or tapping the GREEN wire high +12V.

	Speed	Tach	Oil psi	Oil temp	Fuel	Volt
1 st	- 1 -	[L	- 1 -	- 1 -	- 1 -	- 1 -
2 nd	SPd	- 2 -	- 2 -	- 2 -	- 2 -	- 2 -
3 rd	- 3 -	tCH	- 3 -	- 3 -	- 3 -	- 3 -
4 th	- 4 -	- 4 -	PSI	- 4 -	- 4 -	- 4 -
5 th	- 5 -	- 5 -	- 5 -	F or [- 5 -	- 5 -
6 th	- 6 -	- 6 -	- 6 -	- 6 -	FUL	- 6 -
7 th	- 7 -	- 7 -	- 7 -	- 7 -	- 7 -	ULt
8 th	- 8 -	- 8 -	- 8 -	- 8 -	- 8 -	- 8 -

Please note that the word “switch” in the setup instruction is in reference to the GREEN wire, you can install any momentary push button switch and use that or simply strip the wire back and hold or tap the GREEN wire to a +12V source for set up. Once setup is complete, cover the end of the GREEN wire and secure it so it cannot accidentally be shorted.

To enter setup:

- Press and hold the switch while turning the key on, the gauge should light and show “dxx” (xx is the software code and may be used for tech support).
- Release the switch and “- I-” should be displayed. Looking at the table, on previous page, press and release the switch and scroll through until you see “PS I” on the display; this is the screen you need to get to in order to enter the oil pressure setup.
- Press and hold the switch until “5nd” is displayed, release the switch and the current sender selection will be displayed.
- Press and release the switch until the correct sender type is displayed. “40” for '96-'98 stock sender, “50” for ‘99-up stock sender, “75” for Dakota Digital 75 psi, “ 150” for Dakota Digital 150 psi. **You must select the correct sensor or the gauge will not display correct values!**
- Once the correct sensor type is displayed, press and hold switch until “Lo” is displayed. Release the switch and a number should be displayed. This indicates low voltage warning point.
- Press and release the switch until the desired low pressure warning point is displayed.
- Press and hold the switch until “H I” is displayed, then release the switch.
- Press and release the switch until the desired high pressure warning point is displayed.
- Press and hold the switch until “SPd” is displayed, then release the switch.
- Press and release the switch to change the update rate between fast “F5t” and slow “5L0”.
- Press and hold until “- - -” is displayed to save the settings.
- Turn off key. Setup is complete.

SERVICE AND REPAIR

DAKOTA DIGITAL offers complete service and repair of its product line. In addition, technical consultation is available to help you work through any questions or problems you may be having installing one of our products. Please read through the Troubleshooting Guide. There, you will find the solution to most problems.

Should you ever need to send the unit back for repairs, please call our technical support line, (605) 332-6513, to request a Return Merchandise Authorization number. Package the product in a good quality box along with plenty of packing material. Ship the product by UPS or insured Parcel Post. Be sure to include the RMA number on the package, and include a complete description of the problem with RMA number, your full name and address (street address preferred), and a telephone number where you can be reached during the day. Any returns for warranty work must include a copy of the dated sales receipt from your place of purchase. Send no money. We will bill you after repair.

Dakota Digital 24 Month Warranty

DAKOTA DIGITAL warrants to the ORIGINAL PURCHASER of this product that should it, under normal use and condition, be proven defective in material or workmanship within 24 MONTHS FROM THE DATE OF PURCHASE, such defect(s) will be repaired or replaced at Dakota Digital’s option.

This warranty does not cover nor extend to damage to the vehicle’s systems, and does not cover removal or reinstallation of the product. This Warranty does not apply to any product or part thereof which in the opinion of the Company has been damaged through alteration, improper installation, mishandling, misuse, neglect, or accident.

This Warranty is in lieu of all other expressed warranties or liabilities. Any implied warranties, including any implied warranty of merchantability, shall be limited to the duration of this written warranty. Any action for breach of any warranty hereunder, including any implied warranty of merchantability, must be brought within a period of 24 months from date of original purchase. No person or representative is authorized to assume, for Dakota Digital, any liability other than expressed herein in connection with the sale of this product.

⚠WARNING: This product can expose you to chemicals including lead, which is known to the State of California to cause cancer and birth defects or other reproductive harm. For more information go to www.P65Warnings.ca.gov



4510 W. 61st St. North
Sioux Falls, SD 57107
www.dakotadigital.com
dakotasupport@dakotadigital.com

Phone (605) 332-6513
Fax (605) 339-4106

Copyright 2011 - Dakota Digital, Inc.