

Dakota Digital

Mileage Preset Module Instructions SVC-1001

Used to preset odometer mileage
on all current Dakota Digital gauges

Introduction

This unit will program desired odometer mileage on the HLY-2000, HLY-2001, HLY-2002, HLY-2004, HLY-3011, HLY-3011revC, HLY-3013, HLY-3015, HLY-3016, HLY-5000X, HLY-5011, HLY-6000, ODYR-01-1, ODYR-01-1revC, ODYR-01-3, and ODYR-01-6 gauges along with the STR-5D/6D and VFD-3/3X control boxes for Dakota Digital dash panels. Each gauge has a specific wiring harness that will connect to the mileage-preset box and to the desired gauge or system to be set. The mileage-preset box/module has only four buttons: change, move, enter, and help that are used to set up each gauge. The mileage-preset module provides power to the gauge that is being set. If error or wrong mileage is set the user can simply go through the setup instructions again until the correct mileage is entered. The module can also be used to apply power to a gauge to see what the current odometer miles are. The sections that follow give a detailed outline of how to operate the mileage-preset unit for each gauge or control box.

FEATURES

Pressing ENTER after programmed will jump back to the select gauge menu.

After presetting mileage, Gauge and display will power down to save power after 40 seconds of being idle. Pressing any button will jump back to the select gauge menu.

Unit will power down display if idle for 2 minutes, pressing any button will turn power back on.

The module includes a basic help menu, which is accessed from the gauge selection menu by pressing the HELP button and following the instructions on the display. Pressing the HELP button again will return to the gauge selection menu.

There is a self-test mode for checking the module I/O lines

The module also remembers the last gauge programmed and returns to that gauge the next time the unit is used.

The module includes a power up feature that can be used to preview odometer miles before setting them.

Mileage preset module Operation instructions

- Select the appropriate harness and plug it into the 8-pin connector on the front of the mileage-preset module.
- Plug the other end of the harness into the gauge to be set.
- Make sure the power supply is plugged into the front of the module.
- The screen will display “SELECT GAUGE” and also a Dakota Digital gauge part number. The CHANGE switch can then be used to scroll through the different gauges.
- When the correct gauge part number is displayed, press the ENTER switch on the module.
- Follow the directions on the display. Specific instructions for each gauge follow:
 - For the **HLY-2000** and **HLY-2001** the mileage will appear on the gauge odometer readout. Use the CHANGE switch to increment the highlighted digit and use the MOVE switch to move to the next digit to the left.
 - When the desired mileage is shown, press the ENTER switch.
 - Verify that the mileage is set correctly.

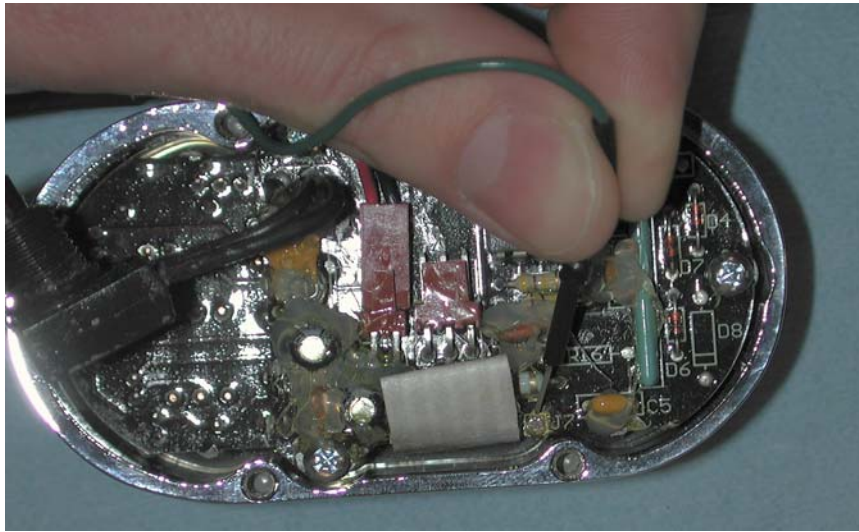
 - For the **HLY-3011** and **ODYR-01-1** the mileage will appear on the gauge odometer readout. Use the silver switch on the front of the HLY-3011 gauge to increment the highlighted digit and use the MOVE switch on the module to move to the next digit to the left.
 - When the desired mileage is shown, press the ENTER switch on the module.
 - Verify that the mileage is set correctly.

 - For the **HLY-3013** and **ODYR-01-3** the mileage will be shown on the module display. Use the CHANGE switch to increment the highlighted digit and use the MOVE switch to move to the next digit to the left.
 - When the desired mileage is shown, press the ENTER switch on the module.
 - Verify that the mileage is set correctly.

 - For the **HLY-3015** the mileage will appear on the mileage preset module display. Use the CHANGE switch to increment the highlighted digit and use the MOVE switch to move to the next digit to the left.
 - When the desired mileage is shown, press the ENTER switch on the module.
 - Verify that the mileage is set correctly.

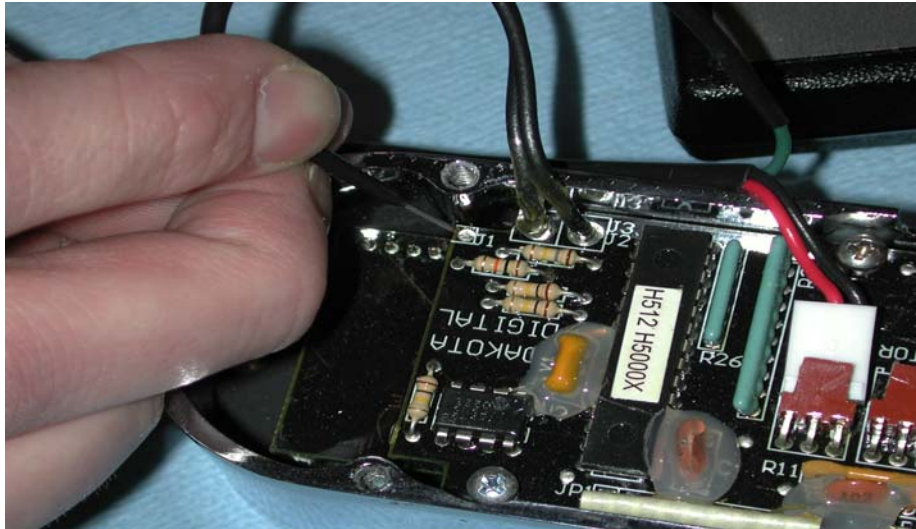
 - For the **HLY-3016**, **HLY-3011revC**, **ODYR-01-6**, and **ODYR-01-1revC** the mileage will be shown on the module display. Use the CHANGE switch to increment the highlighted digit and use the MOVE switch to move to the next digit to the left.
 - When the desired mileage is shown, press the ENTER switch on the module.
 - Verify that the mileage is set correctly.
 - If the odometer menu is not selected, or the gauge was in a different menu before setting the odometer mileage, use the CHANGE switch to maneuver through the gauge menus until the odometer menu is presented after the mileage preset unit displays the verify miles message.

- For the **HLY-5011** you will need to press and hold the black push-button switch on the gauge when told to on the display screen. You will also need to touch the green probe wire, when instructed, to the gauge board as shown here.



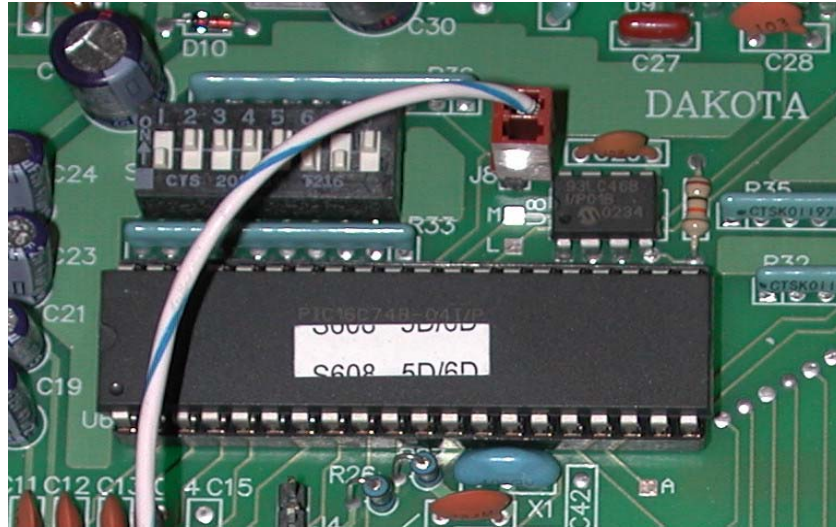
- The mileage will be shown on the module display. Use the CHANGE switch to increment the highlighted digit and use the MOVE switch to move to the next digit to the left.
- When the desired mileage is shown, press the ENTER switch on the preset module and follow the instructions on the module display.
- When instructed to probe J7 hold the probe firmly on the pad, in order to 'pierce' through the coating that is on the circuit board, until the preset unit instructs you to verify the mileage.
- Verify that the mileage is set correctly. You will need to press and hold the black push button switch on the HLY-5011 in order to get to the odometer reading.

- For the **HLY-5000X** you will need to touch the green probe wire to the gauge board as shown here, when instructed to do so.



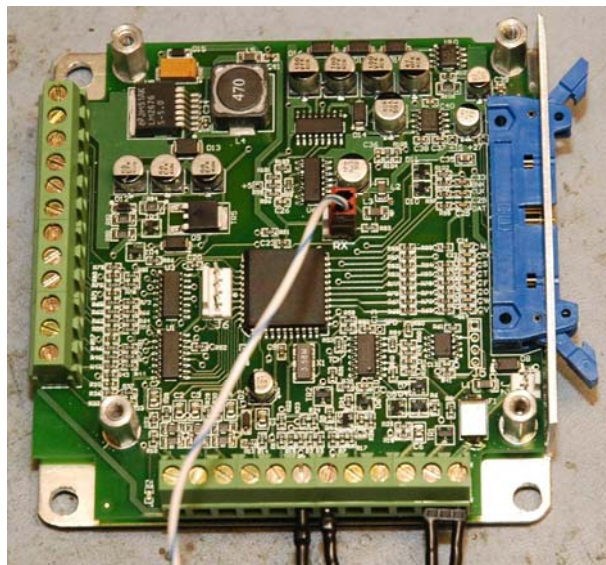
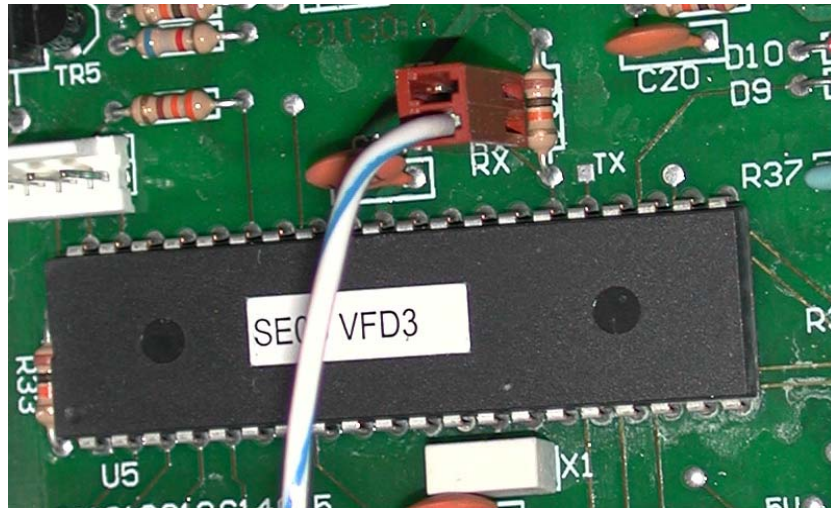
- The mileage will be shown on the mileage preset module display. Use the CHANGE switch to increment the highlighted digit and use the MOVE switch to move to the next digit to the left.
 - When the desired mileage is shown, press the ENTER switch on the module, and follow the instructions on the module.
 - When instructed to probe J1, hold the probe firmly on the pad in order to 'pierce' through the coating that is on the circuit board, until the preset unit instructs you to verify the mileage.
 - Verify that the mileage is set correctly. You will need to press and hold the black push button switch on the HLY-5000X in order to get to the odometer reading.
-
- For the **HLY-6000**, the mileage will appear on the mileage preset module display. Use the CHANGE switch to increment the highlighted digit and use the MOVE switch to move to the next digit to the left.
 - When the desired mileage is shown, press the ENTER switch on the module.
 - Verify that the mileage is set correctly.

- For the **STR-5D/6D** systems the control box for the system will need to be accessed. The four screws that hold on the control box cover will need to be removed so that the circuit board is visible. Connect the harness from the mileage-preset module to the control box. To do this, connect the wire with the connector, white with blue stripe, to J8 on the circuit board, located to the right of the programming switches, above the 40-pin chip. The connector has only one wire in it and should be placed on the pins so the wire is furthest away from the 40-pin chip. Remove any wires that are connected to the ground, power, and dim terminals, remembering their locations so they can be reconnected after mileage is set. Connect power (red), ground (black), and dim (black) from the mileage-preset module to there respective terminals on the control box.



- The mileage will appear on the mileage-preset module. Use the CHANGE switch to change the highlighted digit and the MOVE switch to move to the next digit.
- When the desired mileage is displayed press the ENTER button, the system will turn on and the power will cycle.
- Verify the miles on the odometer.
- Disconnect the mileage-preset harness and reconnect power, ground, and dim wires. Replace control box cover.

- For the **VFD-3/3X** systems the control box for the system will need to be accessed. The four screws that hold on the control box cover will need to be removed so that the circuit board is visible. Remove wires, if control box is already installed, from the dim, sw1, power, and ground terminals remembering which wires go where for reinstallation. Connect the power and ground pins from the mileage-preset module to the control box noticing appropriate locations, black is ground and red is power. Connect the blue wire to the dim terminal; the orange wire connects to the sw1 terminal. Lastly connect the white with blue strip wire to J5 on the circuit board. The white with blue will be connected to J7 on the newest surface mount version control box. The wire should connect closest to the 40-pin chip, the only way the connector can plug in.



- The mileage will appear on the mileage-preset module. Use the CHANGE switch to change the highlighted digit and the MOVE switch to move to the next digit.
- When the desired mileage is displayed press the ENTER button, the system will turn on and the power will cycle.
- Verify the miles on the odometer.
- Disconnect mileage-preset harness and reconnect power, ground, dim, and sw1 wires. Replace control box cover.

VERIFYING ODOMETER MILES

The mileage preset module will power the gauge after the miles have been set, but if you have a gauge and are unsure of the miles or would like to verify the miles before re-setting them, the steps below will describe how to do this:

- Leave the desired gauge harness disconnected
- Apply power to the mileage preset module
- Find the desired gauge using the CHANGE button
- Once at the desired gauge press ENTER. You will be instructed to set mileage
- Now unplug the power
- Plug in the desired gauge harness to both the gauge and module
- Press and hold the ENTER button
- Apply power to the module
- You can now check the odometer miles
- Press ENTER when finished to get back to the gauge selection menu

If the gauge does not show the odometer miles press the HELP key to see further instructions. The CHANGE switch will act as the gauges function switch which is used to advance through different screens on the gauge.

HELP MENU FUNCTION

The help menu can be accessed by pressing the HELP key from the gauge selection menu. The user can press a key, CHANGE, MOVE, or ENTER, and see the functions for that key. Pressing the HELP key while in the help menu will return back to the gauge selection menu.

SELF-TEST PROCEDURE

The self-test routine can be preformed if the mileage preset unit fails when attempting to program a gauge or control box. The simple routine can verify where the problem is for easier tech support from Dakota Digital.

To get the mileage pre-set module into the self-test mode press and hold the HELP button while applying power to the unit, release the HELP button once the "Self Test" message appears on the display. A message will scroll telling the user to remove any harnesses that may be connected, then press the ENTER button to continue with the test. The module will check the input and output lines and then display which line or lines is bad. If no lines are bad there will be an "I/O Lines OK" message. Following the internal circuit test the user will be prompted to push each button. If a button is not working the unit will not continue with the self test, indicating a button failure. If each button passes the test a self test done message will appear instructing the user to press the ENTER button to return back to the gauge selection menu. If an error message appears, record it and contact Dakota Digital.

Dakota Digital

4510 W. 61ST St. N., Sioux Falls, SD 57107
Phone: (605) 332-6513 FAX: (605) 339-4106

www.dakotadigital.com

dakotasupport@dakotadigital.com

©Copyright 2005 Dakota Digital Inc.