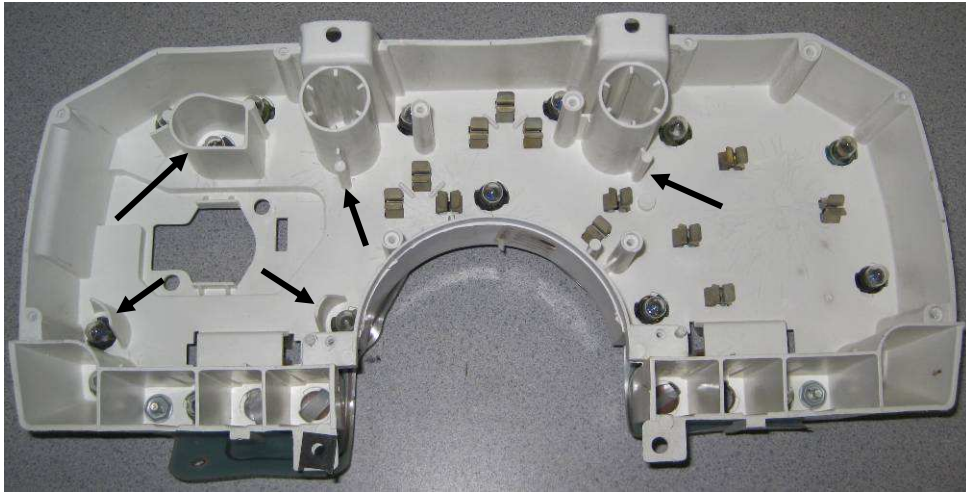


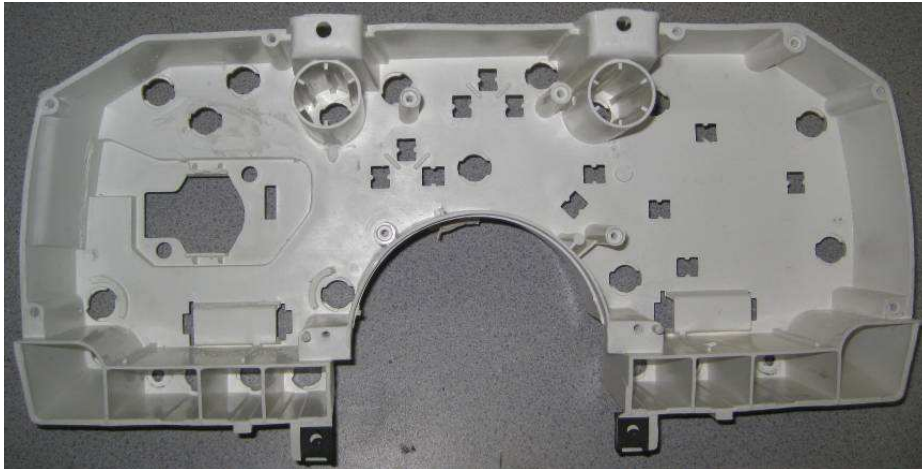
1982-1989 Chevy Camaro Dakota Digital Gauge Installation

This sheet covers installation of the Dakota Digital gauge kit into your original instrument housing.

Remove the stock cluster from the vehicle and remove the clear lens, separator panel and gauges so you are left with the "raw" housing as shown below.

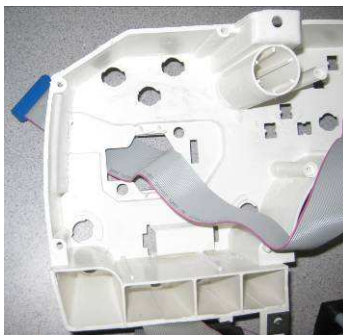


With the light bulbs and electrical contacts removed, use a die grinder or cutoff wheel to remove the plastic bosses from the stock housing as illustrated by the arrows in the photo above.



Modified housing
should look like this
when completed.

Insert the ribbon cable through the opening in the housing and set the system into the housing.



Use the four original screws to secure the Dakota Digital system to the housing.

Install the separator plate and clear lens, then fit the assembled instrument system in to the vehicle.

Refer to main instruction manual for wiring and sensor installation.