



# RTX-61C-IMP

Dakota Digital RTX Instrument Installation  
For 1961-'62 Chevy Impala

Your new RTX-61C-IMP kit includes:



RTX Display



Switch assembly

Universal Sender Pack

Buzzer

Installation Manuals

(6) Thumb Nuts

(2) 1/4-20 Nuts

(3) U-Brackets



Main Harness

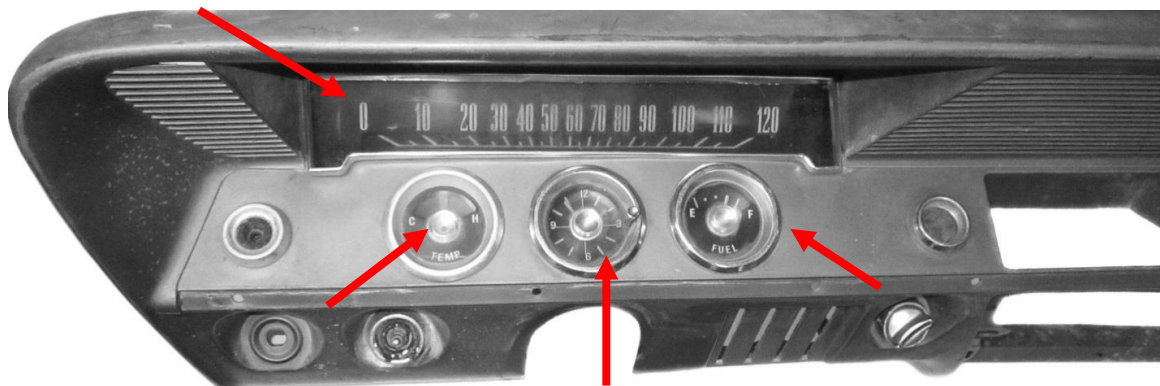


Control Box

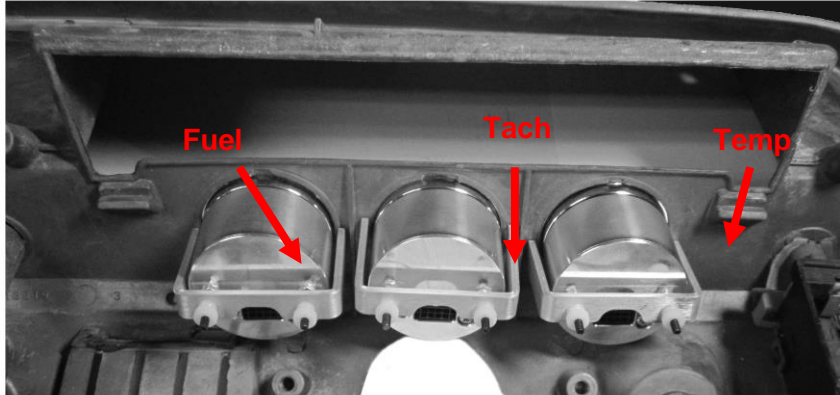


## Installation

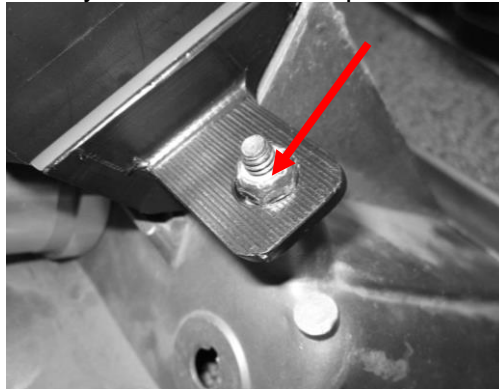
1. Remove the stock gauges from the dash. The thin bezel around the speedo will remain in place.



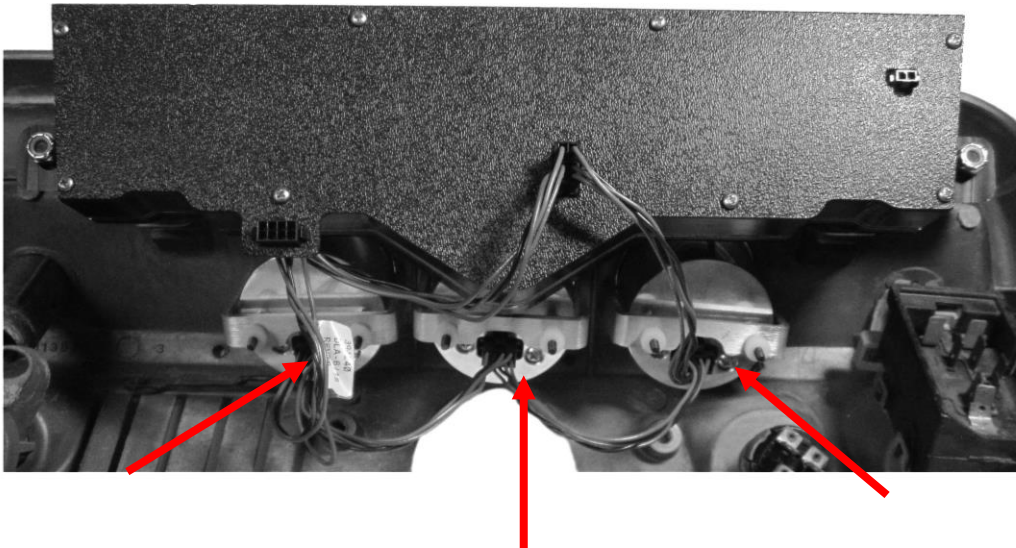
2. Insert the three auxiliary gauges from the front of the dash; from left to right: Temp, Tach, and Fuel. Install the 'U' brackets on the rear of the gauges as shown below, and attach the supplied thumb nuts to secure the gauge to the dash while making sure each gauge is properly orientated.



3. Place the main gauge over the factory studs and use the provided two ¼-20 nuts to secure the gauge to the dash bezel.



4. Make the three (3) interconnect harness connections to the auxiliary gauges with their respective length ends.



5. Connect the provided main harness and the buzzer (optional for audio feedback) to the back of the RTX system.



6. Refer to the main manual for wiring instructions to complete the RTX installation.



**⚠️WARNING:** This product can expose you to chemicals including lead, which is known to the State of California to cause cancer and birth defects or other reproductive harm. For more information go to [www.P65Warnings.ca.gov](http://www.P65Warnings.ca.gov)



4510 W. 61st St. North  
Sioux Falls, SD 57107  
[www.dakotadigital.com](http://www.dakotadigital.com)  
[dakotasupport@dakotadigital.com](mailto:dakotasupport@dakotadigital.com)

Phone (605) 332-6513  
Fax (605) 339-4106

© Copyright 2019 - Dakota Digital