

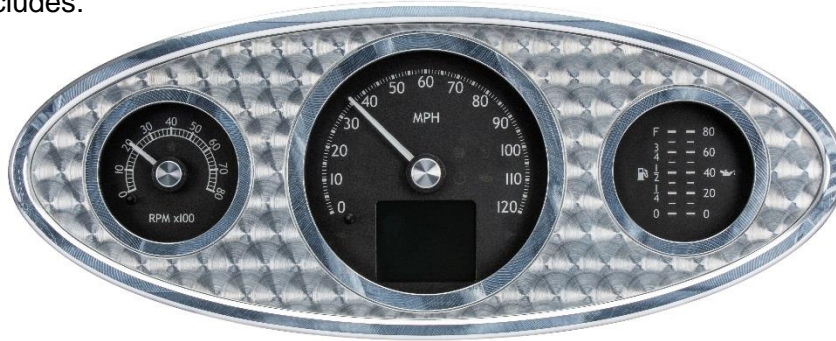


RTX-32F

Dakota Digital RTX Instrument Installation
For 1932 Ford Car and Pickup
Also Fits 1933-'34 Ford Pickup with Modification

Your new RTX-32F kit includes:

RTX Display



Universal Sender Pack



Buzzer



Installation Manuals



Main Harness

Switch Assembly



(4x) Mounting Brackets
(4x) Thumb Nuts



Ford Speed Adapter



Cut template

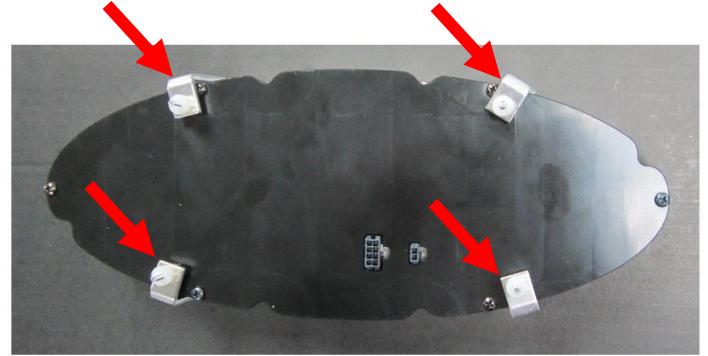


Installation

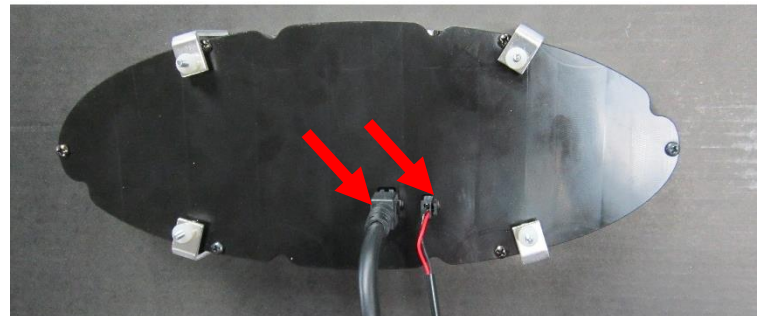
1. For factory dashes; remove the stock gauges from the dash. For custom applications; use the provided cut template to cut to the appropriate size. Trace the inside of the cut template.



2. Place the RTX display in the dash opening and secure using the supplied brackets and thumb screws.



3. Connect the provided main harness and the buzzer (optional for audio feedback) to the back of the RTX system.



4. Refer to the main manual for wiring instructions to complete the RTX installation.



⚠ WARNING: This product can expose you to chemicals including lead, which is known to the State of California to cause cancer and birth defects or other reproductive harm. For more information go to www.P65Warnings.ca.gov



4510 W. 61st St. North
Sioux Falls, SD 57107
www.dakotadigital.com
dakotasupport@dakotadigital.com

Phone (605) 332-6513
Fax (605) 339-4106

© Copyright 2019 - Dakota Digital