



RTX-40F

Dakota Digital RTX Instrument Installation
For 1940 Ford Car
1940-'47 Ford Pickup

Your new RTX-40F kit includes:

RTX Display



Universal Sender Pack



Buzzer



Installation Manuals



Main Harness

Switch assembly



Ford Speed Adapter



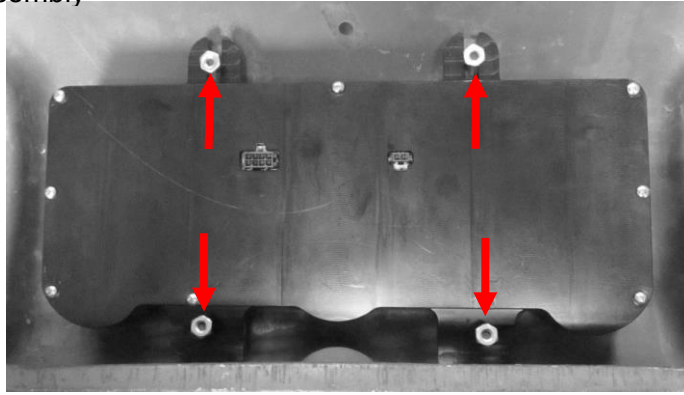
Control Box

Installation

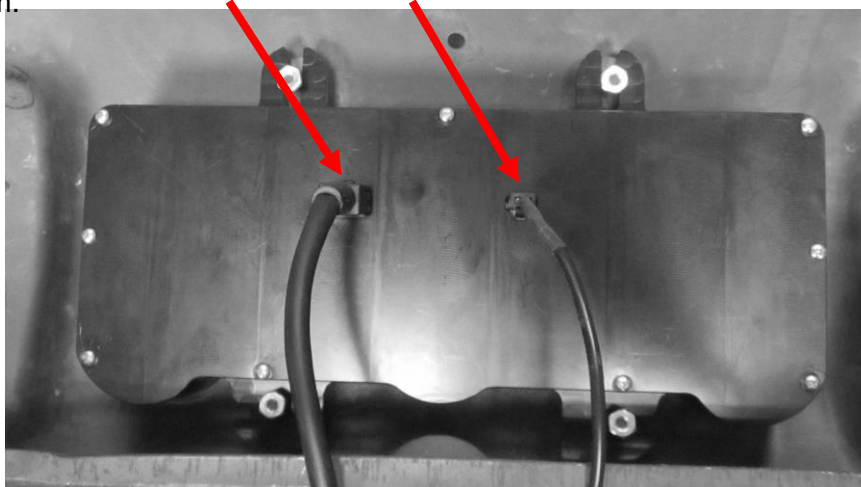
1. Remove the stock gauge cluster from the dash. The mounting hardware will be re-used.



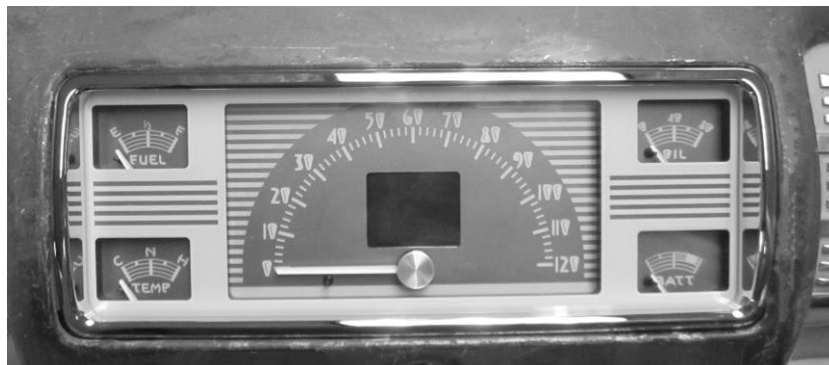
- From the rear of the dash; insert the RTX system into the opening and securely mount using the stock hardware from disassembly



- Connect the provided harness and the buzzer (optional for audio feedback) to the back of the RTX system.



- Refer to the main manual for wiring instructions to complete the RTX installation.



⚠WARNING: This product can expose you to chemicals including lead, which is known to the State of California to cause cancer and birth defects or other reproductive harm. For more information go to www.P65Warnings.ca.gov



4510 W. 61st St. North
Sioux Falls, SD 57107
www.dakotadigital.com
dakotasupport@dakotadigital.com

Phone (605) 332-6513
Fax (605) 339-4106

© Copyright 2019 - Dakota Digital