



RTX-69C-CAM

Dakota Digital RTX Instrument Installation
For 1969 Chevrolet Camaro

Your new RTX-69C-CAM kit includes:

RTX Displays



Universal Sender Pack



Buzzer



Installation Manuals



Switch Assembly



36" Main Harness

Control Box

Interconnect Harness



2x 10-32 x 1" Screws w/ Nylon Washers



2x 10-32 x 1.5" Screws w/ Nylon Shoulder Washers



Foam Tape

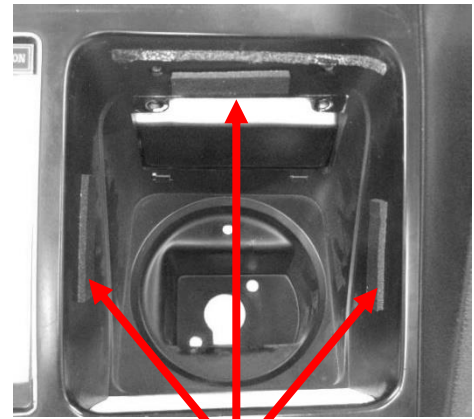


Installation

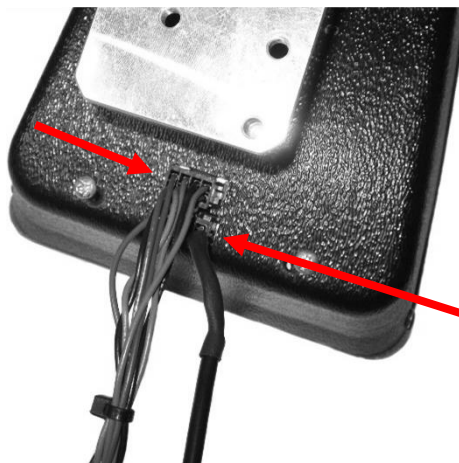
1. Remove the clear lenses, light bulbs, indicator light panels, and gauge internals; they are held into the housing with nuts from the backside. It may be possible to access all the fasteners with the dash carrier installed; removing the entire assembly may not be necessary.



2. For each gauge opening, cut three pieces of the supplied foam tape, 2" long. Install foam strips on the top and sides of each opening about 1/2" down from the face of the housing. This foam provides a cushion where the new RTX cans are installed and forms a tight, rattle-free fit.



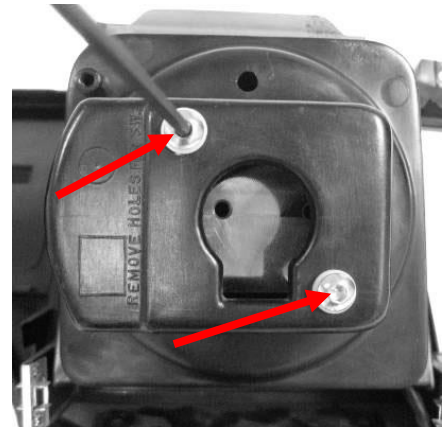
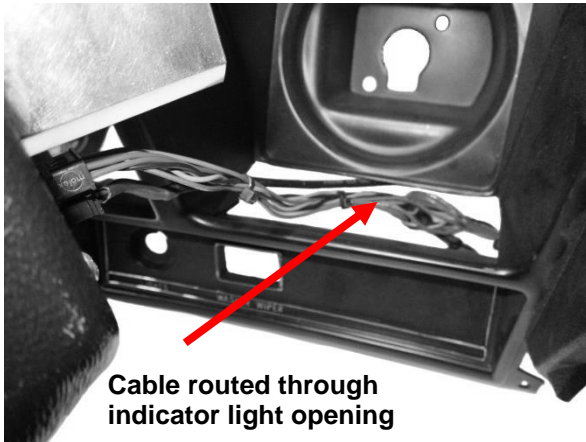
Foam Tape



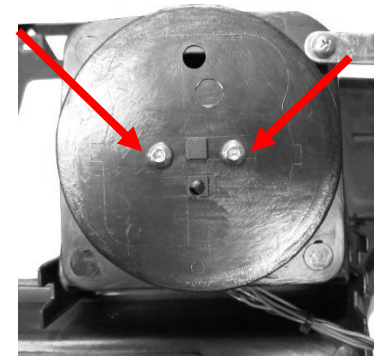
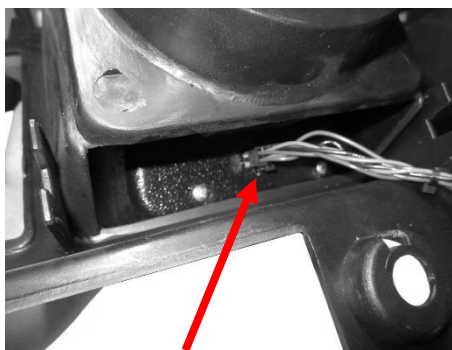
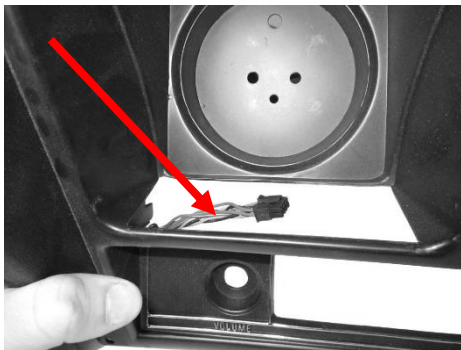
Buzzer Connector

3. Connect one end of the **Interconnect Harness** to the new RTX speed gauge. The Buzzer (optional for audio feedback) may also be connected.

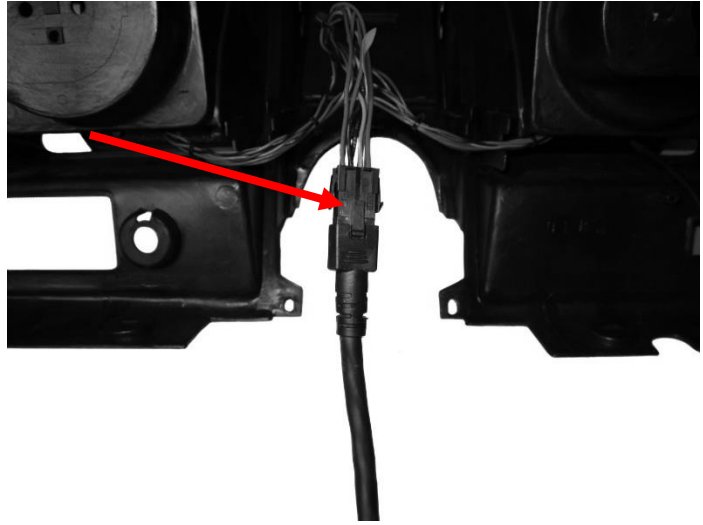
4. Route the other ends of the interconnect harness and the buzzer through the large opening shown below. Using the two provided **10-32 x 1.5" Screws** with **Nylon Shoulder Washers**, secure the speedometer assembly to the housing. Start the screws into the back of the factory housing and into the pull-block on the back of the gauge assembly. Tighten with a 1/8" Allen wrench.



5. To install the tachometer, route the appropriate end of the interconnect harness back through the housing indicator light opening on the tachometer side of the housing and connect to the back of the tachometer gauge. Use the two **10-32 x 1" Screws** with **Flat Nylon Washers** to secure the gauge.



6. Connect the **36" Main Harness** to the interconnect harness, then carefully route the remaining open end to the control box mounting location.



7. Re-install the cluster into the vehicle and refer to the main manual for wiring instructions to complete the RTX installation.



⚠️WARNING: This product can expose you to chemicals including lead, which is known to the State of California to cause cancer and birth defects or other reproductive harm. For more information go to www.P65Warnings.ca.gov



4510 W. 61st St. North
Sioux Falls, SD 57107
www.dakotadigital.com
dakotasupport@dakotadigital.com

Phone (605) 332-6513
Fax (605) 339-4106

© Copyright 2024 - Dakota Digital