

Dakota Digital

LACT-10 HEAVY DUTY TRUNK LIFT KIT

Thank you for purchasing the Dakota Digital trunk lift kit. LADT-6/8/10 units provides 110 pounds of lifting force and 10 inches of travel respectively to open even the heaviest trunk lids.

WARNING: Due to the tremendous power of this unit, failure to mount the unit according to the following instructions can result in damage to your vehicle.

This unit uses a screw drive actuator with built in limit switches. Figure 1 shows the dimensions of the actuator.

The actuator should be mounted as shown in figure 2. With the trunk closed, the actuator should be in its fully retracted position. When the trunk is open, the actuator should be in its fully extended position. Failure to follow these guidelines could result in the actuator caving in the trunk or breaking the hinges. Figure 3 shows the included mounting brackets.

Wiring for the LACT-10 is as follows:

RED - +12 volts fused at 10 Amps.
 BLACK - GROUND
 YELLOW - to trunk motor
 ORANGE - to trunk motor

The switch connections are as follows, looking at the back of the switch.

ORANGE
 BLACK
 RED
 BLACK
 YELLOW

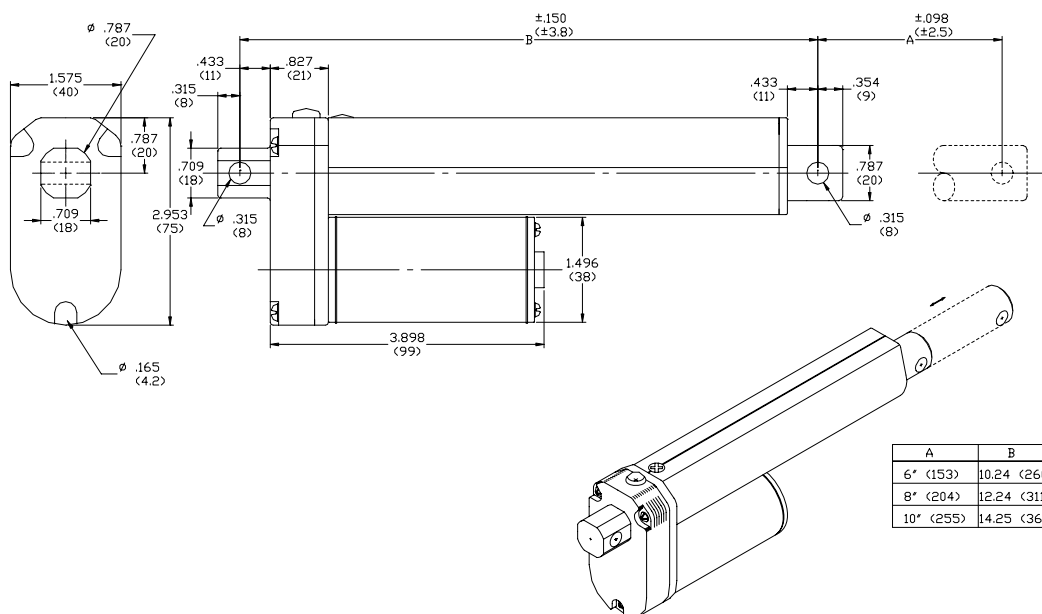


Figure 1.

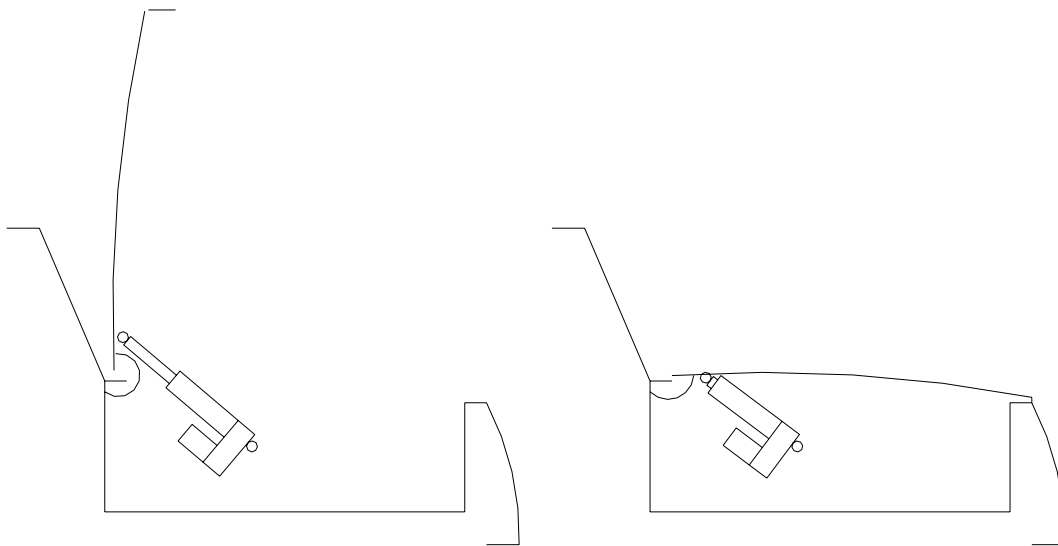


Figure 2.

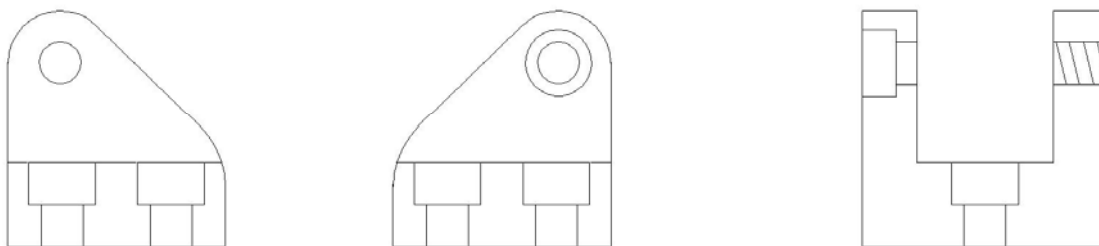


Figure 3.

Dakota Digital

4510 W. 61ST St. N., Sioux Falls, SD 57107
Phone: (605) 332-6513 FAX: (605) 339-4106
www.dakotadigital.com
dakotasupport@dakotadigital.com

©Copyright 2005 Dakota Digital Inc.