

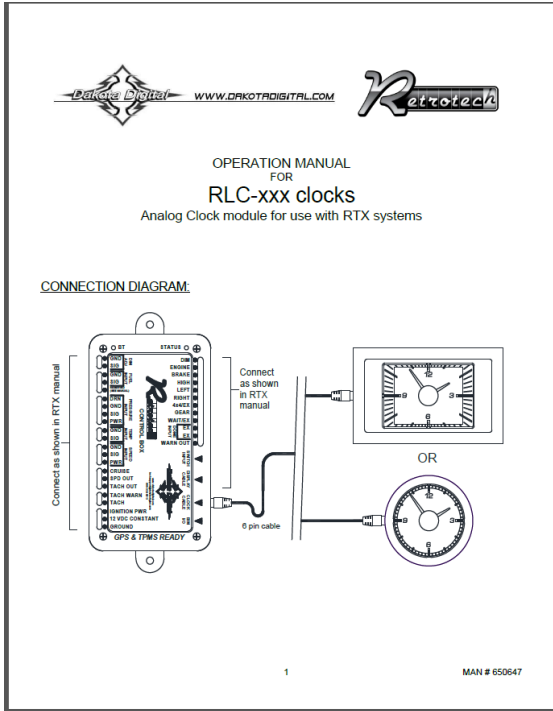


RLC-40F

Dakota Digital RLC Clock Installation
For 1940 Ford Car

Your new RLC-40F kit includes:

Installation Manual



RLC Clock



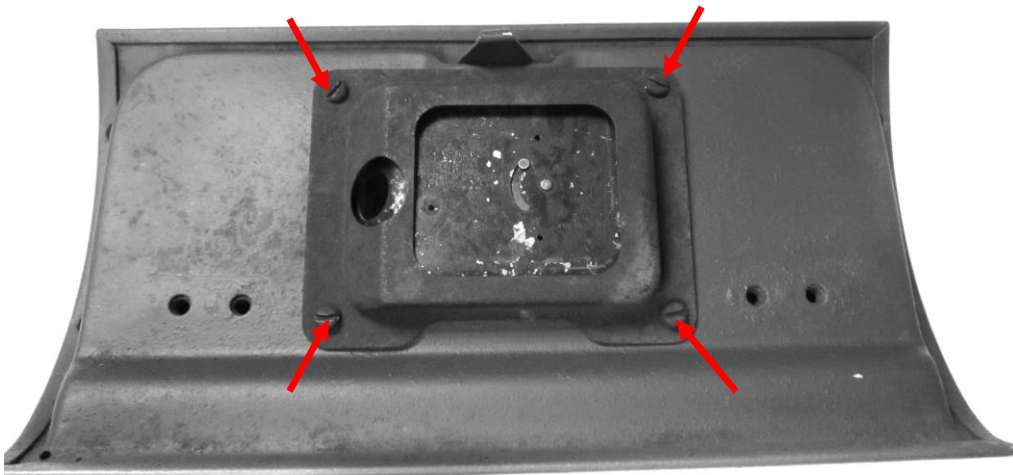
Harness



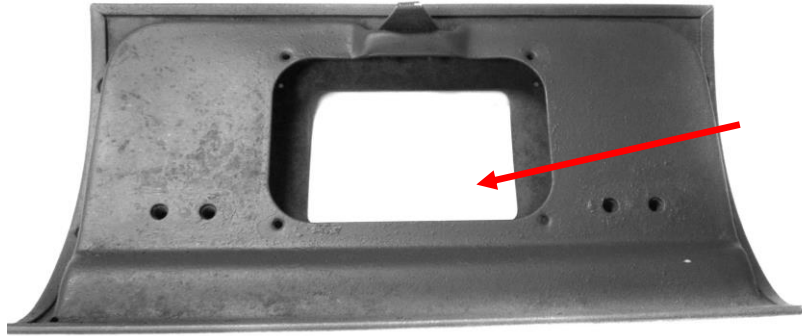
4X 5/8" length Screws

Installation

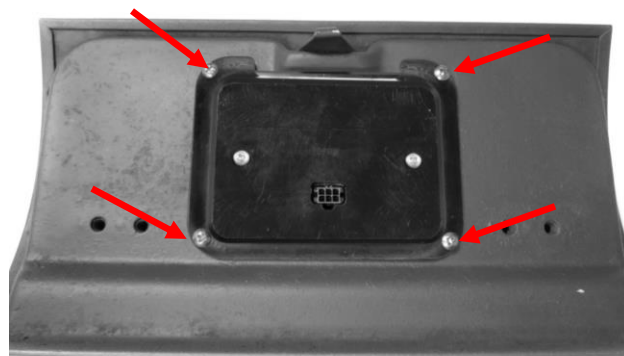
1. Remove the four screws holding the clock to the glove box on the back side.



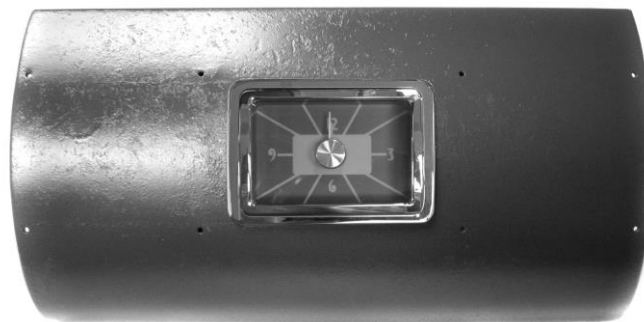
2. Remove the clock assembly and rear housing.



3. Carefully position the new clock from the backside to avoid scratching the chrome. With the four screws provided, secure the new clock to your original glove box.



4. Connect the clock harness to the back of the clock. Route the other end of the harness to the RTX control box and refer to the Operation Manual to complete the clock setup.



⚠️WARNING: This product can expose you to chemicals including lead, which is known to the State of California to cause cancer and birth defects or other reproductive harm. For more information go to www.P65Warnings.ca.gov



4510 W. 61st St. North
Sioux Falls, SD 57107
www.dakotadigital.com
dakotasupport@dakotadigital.com

Phone (605) 332-6513
Fax (605) 339-4106

© Copyright 2019 - Dakota Digital