

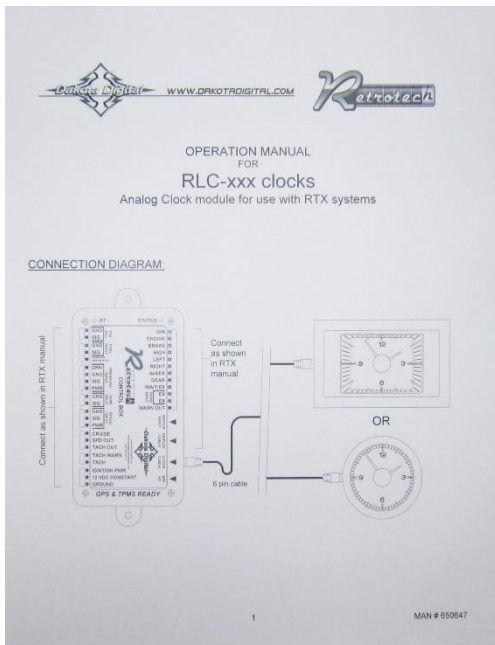


## RLC-42F

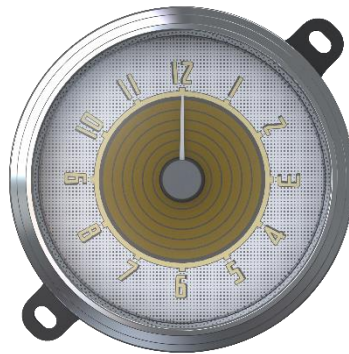
Dakota Digital RLC Clock Installation  
For 1942-'48 Ford Car

Your new RLC-42F kit includes:

### Wiring Manual



### RLC Clock

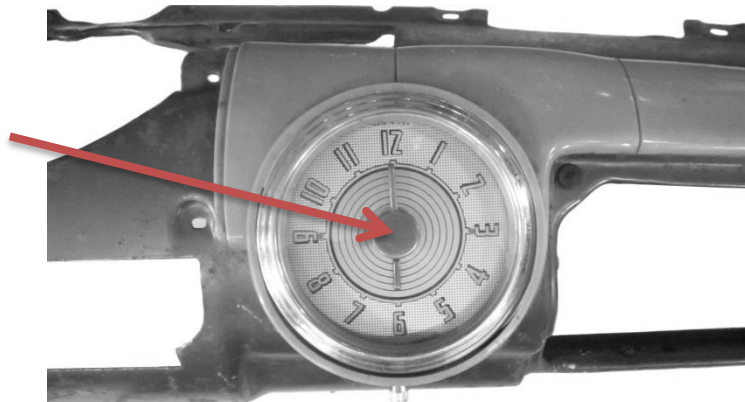


### Harness

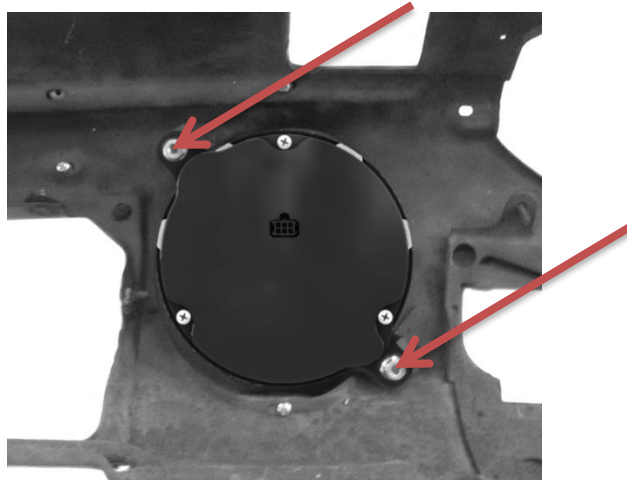


## Installation

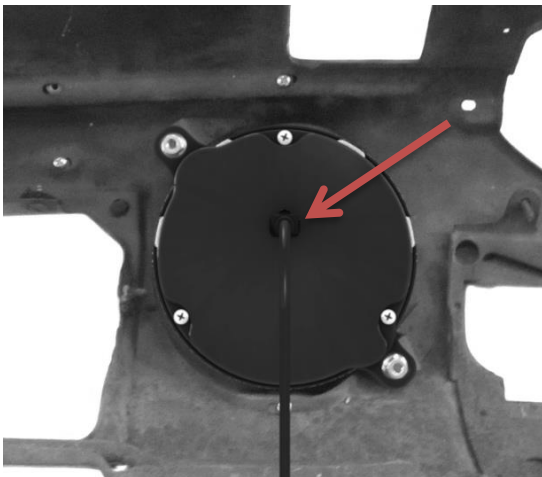
1. Disconnect and remove the original clock from the back side. Retain the factory hardware for RLC installation.



2. With the original clock removed, carefully maneuver the RLC clock in place while lining up the mounting locations and secure the gauge with factory hardware from disassembly.



3. Connect the provided harness to the clock. Route the other end to the RTX control box. Refer to the enclosed clock operating manual for setup.



**⚠ WARNING:** This product can expose you to chemicals including lead, which is known to the State of California to cause cancer and birth defects or other reproductive harm. For more information go to [www.P65Warnings.ca.gov](http://www.P65Warnings.ca.gov)



4510 W. 61st St. North  
Sioux Falls, SD 57107  
[www.dakotadigital.com](http://www.dakotadigital.com)  
[dakotasupport@dakotadigital.com](mailto:dakotasupport@dakotadigital.com)

Phone (605) 332-6513  
Fax (605) 339-4106

© Copyright 2021 - Dakota Digital